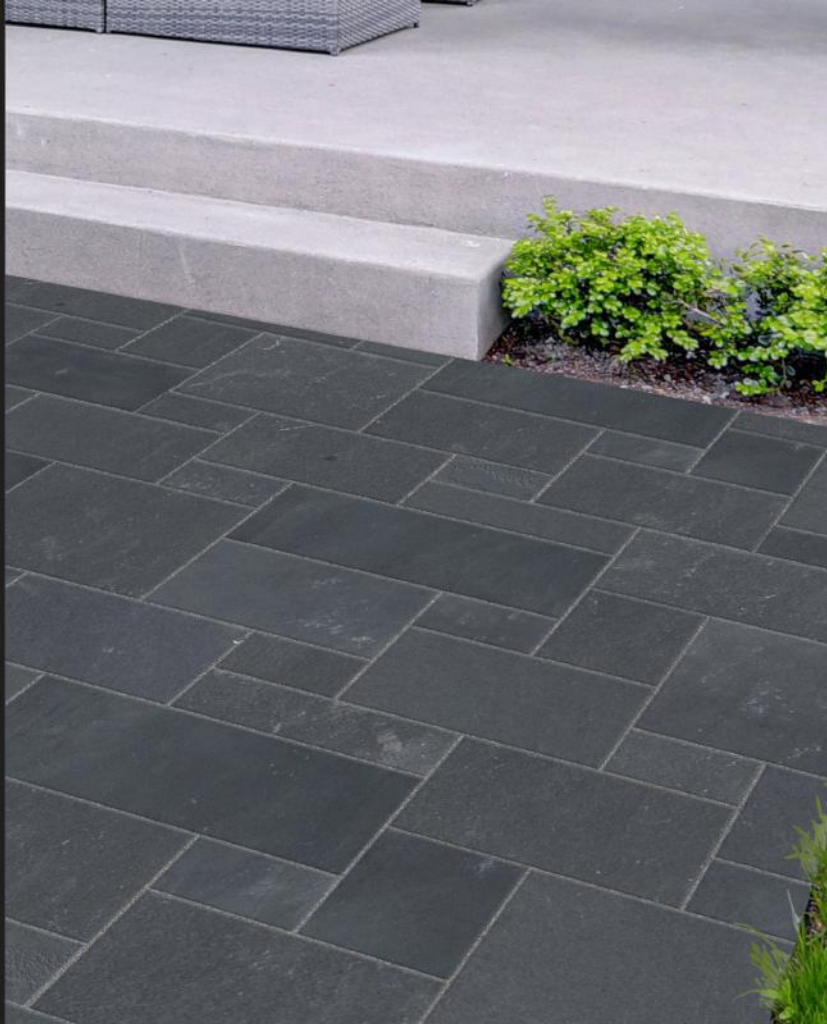


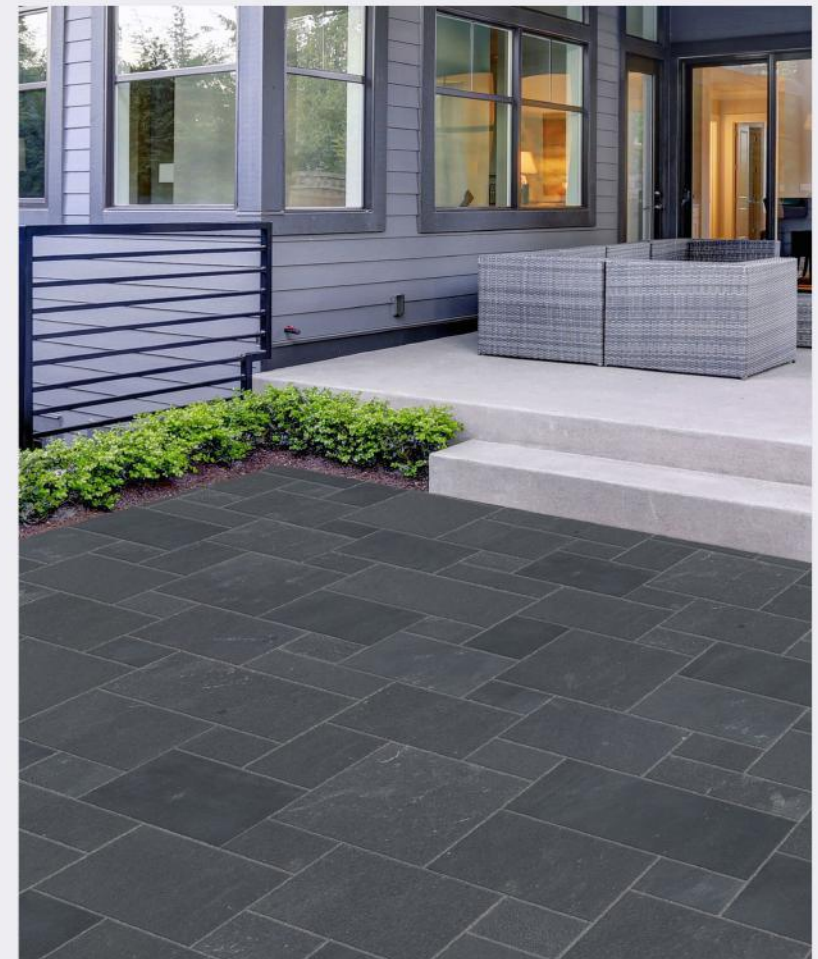
## West Catalog Volume -24



Scan to Explore  
Our E-catalogs



"Customers are the most important visitors on our premises. They are not dependent on us, we are dependent on them. They are not an interruption in our work, they are the purpose of it. They are not an outsider in our business, they are the part of it. We are not doing them the favor by serving them, they are doing us a favor by giving us the opportunity to do so."







Committed to **YOU ALWAYS**

Serving the greater part of **The United States** and **Canada**



East



Midwest



Northwest



South (Texas)



West



Colorado



Porcelain Paver

## Locations

Stone Universe  
(Corporate Headquarters)  
2333 Grant Avenue,  
San Lorenzo, CA 94580  
United States

Stone Universe (South)  
2800 N Alexander Dr,  
Baytown, TX 77520  
United States

Stone Universe (East)  
7521 Lake Drive, Rosedale  
Baltimore, MD 21237  
United States

Stone Universe  
Midwest, United States

Stone Universe (Northwest)  
5315 Milwaukee,  
Ave E, Puyallup  
WA 98372  
United States

Stone Universe (Southwest)  
12102 Centralia Street,  
Hawaiian Gardens  
CA 90716  
United States



Basalt stone quarry

## ABOUT STONE UNIVERSE



Stone Universe Inc. is one of the biggest natural stone wholesalers in the United States. Our journey began in 1999 as a wholesale distributor of natural stones in Gilroy, California. Shortly began the expansion of natural stone products with a focus on hardscaping. Our motive is to fetch the people with a product range where quality speaks for itself & rates are highly affordable. We at Stone Universe Inc believe in continuous expansion and innovation of our product line.

We offer a wide range of products - pool coping, column caps, wall caps, pavers patterns in different sizes and finish, treads, driveway pavers, cobblestone, flagstone, ledge stones, slabs, etc. which is ideal for indoor and outdoor applications for both residential and commercial applications.

With 6 distribution centers in North California, South California, Washington, Maryland, Texas, Wisconsin, we carry trend-setting range of Products from India, Vietnam, Spain Turkey and various other countries.





Steel Quartz LedgeStone

## Why Natural Stones?

### DISCLAIMER

### NEW LAUNCH

### BASALT

### QUARTZITE

### Antique Gold

### SLATE

### California Gold

### SLATE QUARTZITE MIX

### Silver Pearl

### SANDSTONE

### Grey Mist

### Grey Mist Blend

### Ebony Black

05

06

07 - 08

09 - 10

11 - 12

12

13 - 15

14 - 15

16

16

17 - 32

19 - 21

21

22

### Autumn Mist

### Antique Brown

### Dusty Wave

### Vintage White

### Brown Mist

### Buff

### Slate grey

### LIMESTONE

### Antique Black

### Indian Bluestone

### Lime Black

### French vanilla

### TRAVERTINE

### Antique Ivory

23 - 24

25 - 26

27

28

29 - 30

31

32

33 - 42

35 - 36

37 - 38

39 - 40

41 - 42

43 - 46

44



Ebony Black Pavers

### Antique Gris

### Antique Scabos

### PRODUCTS

### Ledge Stone

### Bricks & Fountain

### Irregular Pool Coping

### Firepit

### Slab & Window Sill

### Steps

### Flagstone

### Bullnose

### Eased Edge

### Column Cap

### Wall Cap

45

46

47 - 68

47 - 48

49

50

50

51

52

53 - 54

55

56

57

58

### Thin Veneer

### Stepping Stone

### Pebbles

### Cobbles Stone

### Driveway Pavers

### Rock Face Jumbo Pattern

### Rock Face Random Pattern

### Treads

### Tiles

### Versailles Pattern

### Paver Jumbo Pattern

### Paver Random Pattern

### DISPLAY RACKS

### PACKING CHART

59 - 60

61

61

62

62

63 - 64

64

65

66

66

67

68

68

69 - 70





## Why Natural Stones?

### ENDURANCE

Natural stones are one of the oldest building materials in existence. The use of natural stones can be traced back to the great pyramids of Egypt, the streets of ancient Rome, architectural buildings like the Colosseum, etc. With regular maintenance and care, natural stones have the potential to last literally for decades. Every piece of stone is unique yet maintains a comprehensive overall appearance.

### UNIQUENESS

Natural stone encompasses a wide variety of materials like Limestone, Sandstone, Slate, etc. Each with its own unique properties, color and texture. The presence of impurities gives inimitable color variation in every piece of stone with a rich textured appearance.

### AGING

One advantage of using natural stone is the character of the natural stone changes with age as the stone wears, fades and matures. The weathering effect that occurs with years of use is often considered attractive. Weathering can also be prevented by periodic application of stone sealers on a regular basis.

### ECO-FRIENDLY

Natural stone is an organic product quarried from the earth and is available in abundance. Natural stone does not contain any harmful chemicals and ensures a safer environment. Further, natural stones can be salvaged, reused and recycled.

### EASE OF MAINTENANCE

With the use of recommended cleaners and sealing the stone on a regular basis, makes it relatively easy to clean. With little care and precautions, the natural beauty of the stone can be preserved.

The above-mentioned advantages of natural stone make it a popular choice of material for construction and architectural purposes.



## Disclaimer



Variations in color, texture, veining, cleffing, etc. is an aspect of natural stones & should not be considered as flaws. Natural Stones are composed of minerals which makes it susceptible to various chemicals & harsh environments. Exposure to elements like sun, rain, snow, etc. over a period of time can affect the look of natural stones. Some of the most common effects include oxidation (or rusting), flaking, weathering, etc. We strongly discourage the use of acidic cleansers and suggest seeking professional help if necessary. It is recommended to seal natural stones periodically to reduce environmental effects.

All our products have dimensional tolerances which are an industry standard. Further, we recommend using the standard installation process and sealers recommended by the American National Standards Institute (ANSI) for natural stones as the process vary from installer to installer. It is extremely significant to inspect the material before fabrication or installation as we do not take any liability once the product is altered or installed.

NATURAL STONE  
DISCLAIMER





## NEW LAUNCH



Available in : 1"-3"±, 1"-3"± (Loose)



Crystal White



Polished Black



Yellow High Polished



White High Polished

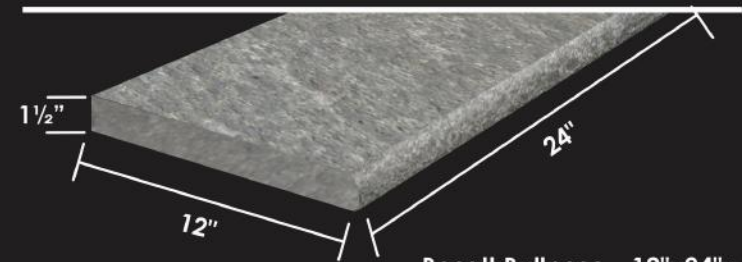


Mix High Polished

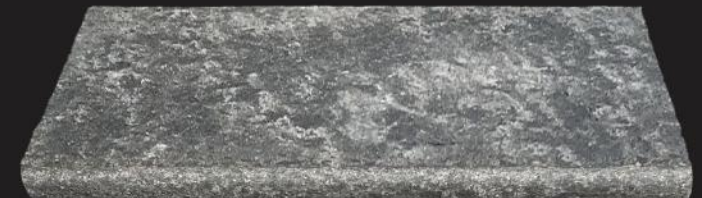
Disclaimer- Not recommended the use of any pebbles in conjunction with DYED mulches of any kind.



## NEW LAUNCH



Basalt Bullnose - 12"x24"x 1 1/2"  
(1 long side bullnose)



### Antique Yellow Flagstone

1" – Concrete Base, 2" – Sand Base







# BASALT



Basalt is an igneous, volcanic rock that is produced by hardened lava. Basalt is mafic, which means it contains minerals with significant iron and magnesium. Other minerals making up basalt include pyroxene, plagioclase feldspar, amphibole and olivine. Basalt historically was used in street pavers & stadium seating in ancient Rome. Today, basalt finds its use in several industrial applications, including building materials and thermal insulators. Additionally, they are used as wall panels, countertops and fireplaces among others due to high abrasion resistance & compressive strength. High tensile strength, vibration resistance and durability make it an ideal choice for hardscaping.

**Finish :** Thermal finish, edges are saw-cut, chiselled or a mixture of both depending on the product.

**Color Variation :** ★★☆☆☆

TYPE	Size in Inches (Approx.)
BULLNOSE (1 long side bullnose)	12"x24"x1 1/4"±
	14"x24"x2"±
COBBLESTONES	3 1/2"x3 1/2"x2"±
	3 1/2"x3 1/2"x3 1/2"±
EASED EDGE (1 long side eased edge)	14"x24"x2"±
FLAGSTONE (sandbase)	16"-30"x1 1/4"±
FOUNTAIN	L = 50" - 60"±, W = 16" - 26"±, Hole = 1.25"±
PAVER JUMBO PATTERN (4 sides saw cut)	12"x12"x1 1/4"±
	12"x24"x1 1/4"±
	24"x24"x1 1/4"±
	24"x36"x1 1/4"±
ROCK FACE JUMBO PATTERN (4 sides rock face)	12"x12"x1 1/4"±
	12"x24"x1 1/4"±
	24"x24"x1 1/4"±
	24"x36"x1 1/4"±
SLAB (4 sides saw cut)	72"x27"x2"±
STEP (3 sides rock face & 1 long side saw cut)	48"x16"x6"±
TREADS (3 sides eased edge & 1 long side rock face)	48"x12"x2"±
	60"x16"x2"±
WALL CAP (4 sides rock face)	14"x24"x2"±



## PAVER JUMBO PATTERN 1 1/4"±

(4 sides saw cut)

12"x12"x1 1/4"±

12"x24"x1 1/4"±

24"x24"x1 1/4"±

24"x36"x1 1/4"±



## ROCK FACE JUMBO PATTERN 1 1/4"±

(4 sides rock face)

12"x12"x1 1/4"±

12"x24"x1 1/4"±

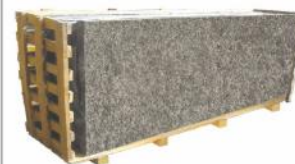
24"x24"x1 1/4"±

24"x36"x1 1/4"±



## SLAB (4 sides saw cut)

72"x27"x2"±



## FOUNTAIN

L = 50" - 60"±

W = 16" - 26"±

Hole = 1.25"±



## TREADS (3 sides eased edge & 1 long side rock face)

48"x12"x2"±

60"x16"x2"±



## FLAGSTONE (sandbase)

16"-30"x1 1/4"±



## COBBLESTONES

3 1/2"x3 1/2"x2"±

3 1/2"x3 1/2"x3 1/2"±



## STEP (3 sides rock face & 1 long side saw cut)

48"x16"x6"±



## BULLNOSE (1 long side bullnose)

12"x24"x1 1/2"±

14"x24"x2"±



## EASED EDGE

(1 long side eased edge)

14"x24"x2"±



## WALL CAP (4 sides rock face)

14"x24"x2"±



\* Special order only.





## QUARTZITE



Quartzite is a hard, non-foliated metamorphic rock formed pure quartz sandstone. Sandstone is converted into quartzite due to heat and pressure of tectonic ompression of the earth's crust. Pure quartzite is usually white to grey, though quartzite often occur in various shades of pink and red due to the presence of iron oxide in varying amounts. Mineral impurities change the color of stone to yellow, green, blue and orange etc.

Quartzite is extremely durable and makes it suitable for use in most demanding applications. Quartzite is harder than granite & marble, it stands up better to abrasion in stair treads, floor tiles and countertops. It is also more resistant to most chemicals and environmental conditions. The glossy surface and the color variation makes it a suitable choice for decorative and landscaping purposes, It is most commonly used in indoor flooring, countertops and fireplace surround.

## ANTIQUE GOLD



Antique gold is tumbled quartzite showcasing a blend of shimmering colors like gold, pink, brown, turquoise etc. to form unique random patterns within the project while maintaining a comprehensive strength of quartzite makes it suitable for a wide range of applications.

**Finish:** Tumbled finish, edges are saw-cut or smooth edges.

**Color Variation:** ★★★★★

TYPE	Size in Inches (Approx.)
PAVER VERSAILLES PATTERN (4 sides saw cut)*	1"±
FLAGSTONE (concrete base)	1"±
FLAGSTONE (sand base)	2"±
*PAVER VERSAILLES PATTERN Sizes include 8"x8", 8"x16", 16"x16", 16"x24" Nominal sizing 1/2"± under	

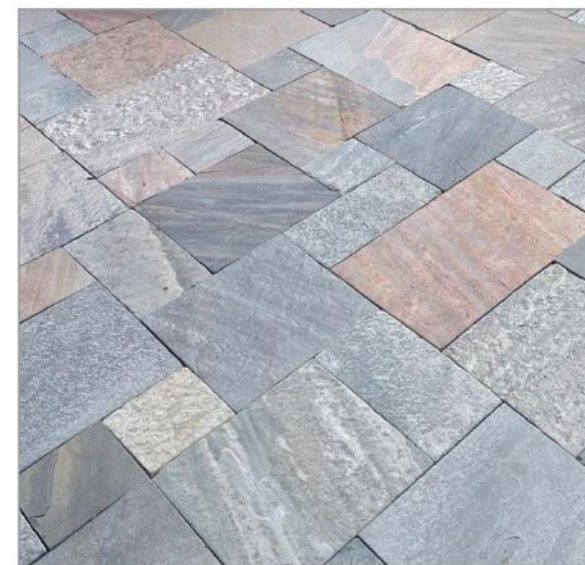
### FLAGSTONE

1"± (concrete base)  
2"± (sand base)



### PAVER VERSAILLES PATTERN 1"± (4 sides saw cut)

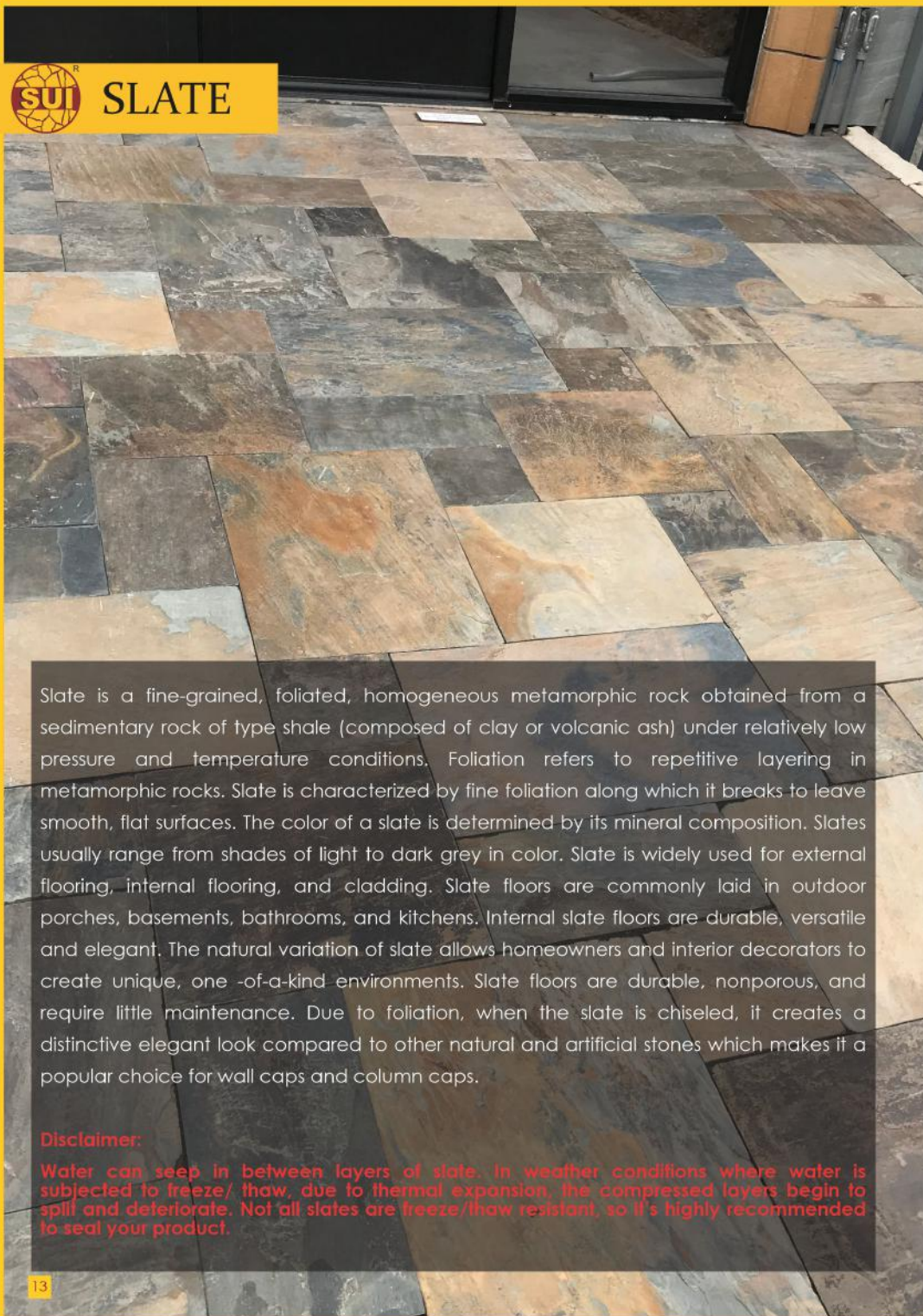
(Sold in 16 sq.ft increments)  
16 sq.ft - Pattern includes  
8"x8" 4 pieces  
8"x16" 2 pieces  
16"x16" 4 pieces  
16"x24" 2 pieces







## SLATE



Slate is a fine-grained, foliated, homogeneous metamorphic rock obtained from a sedimentary rock of type shale (composed of clay or volcanic ash) under relatively low pressure and temperature conditions. Foliation refers to repetitive layering in metamorphic rocks. Slate is characterized by fine foliation along which it breaks to leave smooth, flat surfaces. The color of a slate is determined by its mineral composition. Slates usually range from shades of light to dark grey in color. Slate is widely used for external flooring, internal flooring, and cladding. Slate floors are commonly laid in outdoor porches, basements, bathrooms, and kitchens. Internal slate floors are durable, versatile and elegant. The natural variation of slate allows homeowners and interior decorators to create unique, one -of-a-kind environments. Slate floors are durable, nonporous, and require little maintenance. Due to foliation, when the slate is chiseled, it creates a distinctive elegant look compared to other natural and artificial stones which makes it a popular choice for wall caps and column caps.

### Disclaimer:

Water can seep in between layers of slate. In weather conditions where water is subjected to freeze/ thaw, due to thermal expansion, the compressed layers begin to spill and deteriorate. Not all slates are freeze/thaw resistant, so it's highly recommended to seal your product.

## CALIFORNIA GOLD



Type	Size in inches (Approx.)
Bullnose (1 long side bullnose)	12"x24"x1 1/2"±
	14"x24"x2"±
COLUMN CAP (4 sides rock face)	24"x24"x2"±
	29"x29"x2"±
FLAGSTONE (concrete base)	1"±
FLAGSTONE (sand base)	2"±
LEDGE STONE - PANEL	6"x24"x3/4"±
LEDGE STONE - CORNER	6"x18"x6"x3/4"±
	8"x8"x1 1/4"±
PAVER (4 sides saw cut)	8"x16"x1 1/4"±
	16"x16"x1 1/4"±
	16"x24"x1 1/4"±
	16"x24"x1 1/4"±
TILE VERSAILLES PATTERN* (4 sides saw cut)	1/2"±
PAVER VERSAILLES PATTERN* (4 sides saw cut)	1 1/4"±
PAVER RANDOM PATTERN (4 sides saw cut)	12"x12"x1 1/4"±
	12"x24"x1 1/4"±
	24"x24"x1 1/4"±
	12"x12"x1/2"±
TILE (4 sides saw cut)	16"x16"x1/2"±
	12"x24"x1/2"±
	12"x24"x1/2"±
	24"x24"x1/2"±
WALL CAP (4 sides rock face)	12"x24"x1 1/2"±
	12"x24"x1 1/2"±

\*PAVER VERSAILLES PATTERN Sizes include 8"x8", 8"x16", 16"x16" 16"x24" Nominal sizing 1/2"± under

### Bullnose (1 long side bullnose)

12"x24"x1 1/2"±

14"x24"x2"±



### Ledge Stone (Non-Cement Backing)



Corner - 6"x18"x6"x3/4"±

Panel - 6"x24"x3/4"±



California gold is a tumbled slate that depicts a dynamic range of colors from gold, browns, greys etc. Which creates mesmerizing and stunning interior and exterior surfaces. The robust coloring makes room for inexhaustible design ideas.

**Finish:** Natural finish, edges are saw-cut, bullnose, chiseled edges or a mixture depending on the product.

**Color variation:** ★★★★★

\*Disclaimer: California gold is not recommended for installation around or near pool, spas and hot tubs.







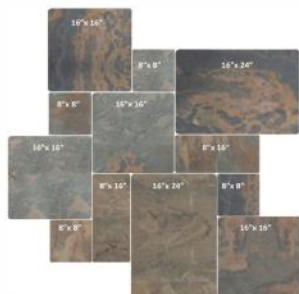
## CALIFORNIA GOLD

### PAVER VERSAILLES PATTERN 1 1/4"±

(4 sides saw cut)

Also available in loose:

8"x8"x1 1/4", 8"x16"x1 1/4", 16"x16"x1 1/4", 16"x24"x1 1/4"±

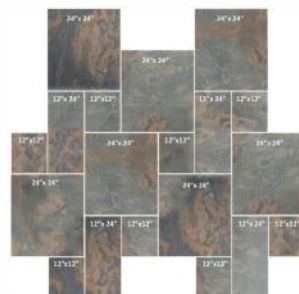


### PAVER RANDOM PATTERN 1 1/4"±

(4 sides saw cut)

12"x12"x1 1/4", 12"x24"x1 1/4",

24"x24"x1 1/4"±



### COLUMN CAP

(4 sides rock face)

24"x24"x2"±, 29"x29"x2"±



### WALL CAP

(4 sides rock face)

12"x24"x1 1/2"±



### FLAGSTONE

1"± (concrete base)

2"± (sand base)



### TILE VERSAILLES PATTERN 1/2"±

(4 sides saw cut)

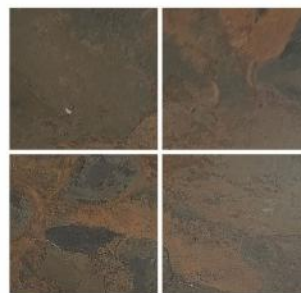
12"x12"x1/2"±

16"x16"x1/2"±

12"x24"x1/2"±

24"x24"x1/2"±

(Also available  
in loose)



Silver Pearl comprises dark variants of black to grey. This vibrant slate quartzite stone blends well with other colors to provide lavishing appeal outdoors.

**Finish:** Natural Finish, edges are chiseled or a mixture depending on the product.

**Color Variation:** ★★☆☆☆

Type	Size in inches (Approx.)
FLAGSTONE (Concrete Base)	1"±
FLAGSTONE (Sand Base)	2"±
LEDGE STONE - PANEL	6"x24"x1/4"±
LEDGE STONE - CORNER	6"x18"x6"x1/4"±
THIN VENEER - Antique Castle (Flat & Corner)	1"±
THIN VENEER - Dimensional (Flat & Corner)	1"±
THIN VENEER - Fieldstone (Flat & Corner)	1"±
THIN VENEER - Ledge (Flat & Corner)	1"±
WINDOW SILL (1 long side rock face)	24"x3"x2"±

### THIN VENEER (Ledge) 1"±



### THIN VENEER (Antique Castle) 1"±



### THIN VENEER (Dimensional) 1"±



### THIN VENEER (Fieldstone) 1"±



### WINDOW SILL

(1 long side rock face)

24"x3"x2"±



### LEDGE STONE (Non-Cement Backing)

Corner - 6"x18"x6"x3/4"±

Panel - 6"x24"x3/4"±



## SILVER PEARL



### SLATE QUARTZITE MIX

### FLAGSTONE

1"± (concrete base)

2"± (sand base)







Autumn Mist

Sandstone is one of the most common types of sedimentary rock and is made up of three components - sediment particles, matrix, and cement. The sediment particles are pieces of minerals and fragments of rock. Matrix is a fine material that is present between the sediment and cement is the secondary mineral that binds the sediment to rock. Sandstone displays a lot of character, depending on the mix of matrix and cement, it portrays a wide range of colors from white to black, with grey, brown, red, pink and buff in between. It is durable and versatile, which makes it an ideal choice for indoors and outdoors. Sandstone are used in indoor settings such as flooring, kitchen counters & back splashes. Because of its natural ability to regulate heat, sandstone makes for excellent paving, especially for pool sides. It's naturally non slip, stays cool under foot in the summer and radiates heat in winter. It can be used to build outdoor ovens, fireplaces, patios or porches, retaining walls and walkways.

**Disclaimer:**

The hardness of sandstone varies depending on the binding material (cement). If the sediment particles are cemented by calcite, the sandstone will seem softer.











## GREY MIST

### BULLNOSE (1 long side bullnose)

12"x24"x1 1/2"±  
14"x24"x2"±



### EASED EDGE (1 long side eased edge)

14"x24"x2"±



### COLUMN CAP (4 sides rock face)

24"x24"x1 1/4"±  
22"x22"x2"±  
24"x24"x2"±  
26"x26"x2"±  
29"x29"x2"±



### WALL CAP (4 sides rock face)

12"x24"x1 1/4"±  
14"x24"x2"±



## GREY MIST BLEND

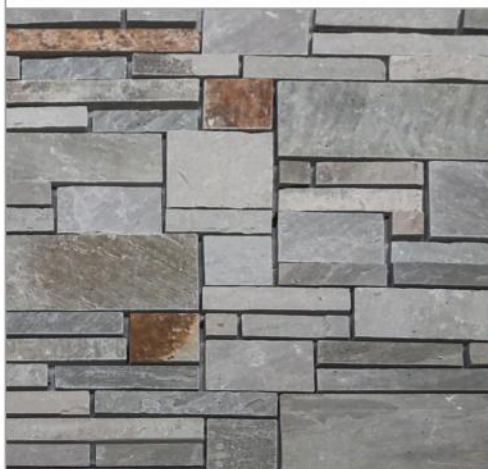
### THIN VENEER (Ledge) 1"±



### THIN VENEER (Antique Castle) 1"±



### THIN VENEER (Ashlar) 1"±



TYPE	Size in Inches (Approx.)
Thin Veneer - Ledge (Flat & Corner)	1"±
Thin Veneer - Ashlar (Flat & Corner)	1"±
Thin Veneer - Antique Castle (Flat & Corner)	1"±

Ebony Black sandstone displays medium to dark shades of grey and beige that can be used to create intriguing designs.

**Finish:** Natural finish, Edges are saw-cut, Chiseled edges or a mixture depending on the product.

Color Variation: ★★★★★

TYPE	SIZE IN INCHES (Approx.)
COBBLESTONES	3 1/2"x3 1/2"x3 1/2"± 3 1/2"x3 1/2"x2"±
FLAGSTONE (Concrete Base)	1"±
FLAGSTONE (Sand Base)	2"±
PAVER JUMBO PATTERN (4 sides saw cut)	12"x12"x1 1/4"±
	12"x24"x1 1/4"±
	24"x24"x1 1/4"±
	24"x36"x1 1/4"±
TREADS (3 sides rock face & 1 long side saw cut)	48"x12"x2"±
	60"x16"x2"±
WALL CAP (4 sides rock face)	14"x24"x2"±

### COBBLESTONES

3 1/2"x3 1/2"x3 1/2"±  
3 1/2"x3 1/2"x2"±



### WALL CAP (4 sides rock face)

14"x24"x2"±



### TREADS (3 sides Rock Face & 1 long side saw cut)

48"x12"x2"±  
60"x16"x2"±



## EBONY BLACK



### PAVER JUMBO PATTERN 1 1/4"±

(4 sides saw cut)

12"x12"x1 1/4"±  
12"x24"x1 1/4"±  
24"x24"x1 1/4"±  
24"x36"x1 1/4"±



### FLAGSTONE

1"± (Concrete Base)  
2"± (Sand Base)



\* Special order only.





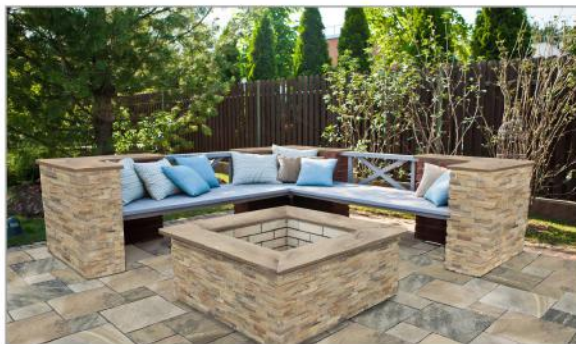
# AUTUMN MIST

A beige-brown colored sandstone characterized by beautiful, unique fern-like fossil patterns, brown swirls throughout the surface.

Finish: Natural finish, edges are saw-cut, bullnose, chiseled edges or a mixture depending on the product.

Color Variation: ★★★★★

\*Disclaimer: Autumn mist is not recommended for installation around or near pools, spas and hot tubs.



## PAVER JUMBO PATTERN 1 1/4"±

(4 sides saw cut)  
12"x12"x1 1/4"±  
12"x24"x1 1/4"±  
24"x24"x1 1/4"±  
24"x36"x1 1/4"±



## ROCK FACE JUMBO PATTERN 1 1/2"±

(4 sides rock face)  
12"x12"x1 1/2"±  
12"x24"x1 1/2"±  
24"x24"x1 1/2"±  
24"x36"x1 1/2"±



## LEDGE STONE

(Non-Cement Backing)

Corner - 6"x18"x6"x3/4"±

Panel - 6"x24"x3/4"±



## THIN VENEER (Ledge) 1"±



## STEP

(4 sides rock face)  
48"x16"x6"±



## STEPPING STONE

(Irregular)  
15"-18"x1 1/4"±



## SLAB

(4 sides rock face)  
72"x36"x2"±



## WINDOW SILL

(1 long side rock face)  
24"x3"x2"±



## COLUMN CAP

(4 sides rock face)  
24"x24"x1 1/2"±  
24"x24"x2"±  
29"x29"x2"±



## WALL CAP

(4 sides rock face)  
12"x24"x1 1/2"±  
14"x24"x2"±



## FLAGSTONE

1"± (Concrete Base)  
2"± (Sand Base)



## TREADS (3 sides rock face & 1 long side saw cut)

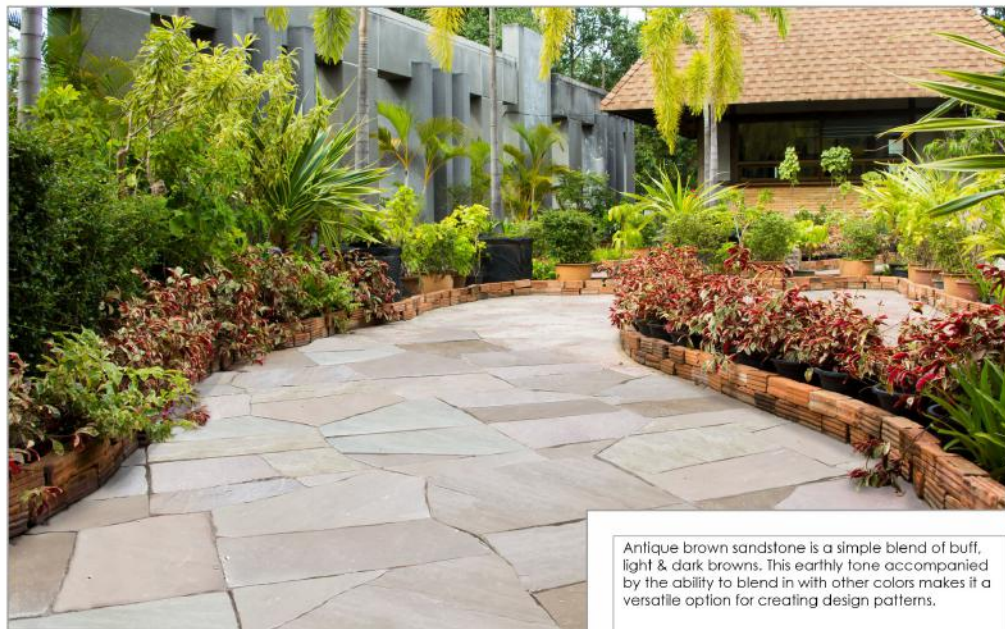
60"x16"x2"±  
72"x18"x2"±







# ANTIQUE BROWN



Antique brown sandstone is a simple blend of buff, light & dark browns. This earthy tone accompanied by the ability to blend in with other colors makes it a versatile option for creating design patterns.

**Finish:** Natural finish, edges are saw cut, bullnose, chiseled edges or a mixture depending on the product.

Color Variation: ★★☆☆☆

TYPE	SIZE IN INCHES (Approx.)
BULLNOSE (1 long side bullnose)	14"x24"x2"±
COLUMN CAP (4 sides rock face)	24"x24"x1 1/4"±
DRIVEWAY PAVERS (rock face)	6"x6"x1 1/2"±
EASED EDGE (1 long side eased edge)	14"x24"x2"±
FLAGSTONE (Concrete Base)	1"±
FLAGSTONE (Sand Base)	2"±
PAVER (4 sides saw cut)	16"x24"x1 1/4"±
PAVER VERSAILLES PATTERN (4 sides saw cut)	1 1/2"±
ROCK FACE JUMBO PATTERN (4 sides rock face)	12"x12"x1 1/4"±
	12"x24"x1 1/4"±
	24"x24"x1 1/4"±
	24"x36"x1 1/4"±
STEPPING STONE - HEART	15"x 18"x1 1/4"±
STEPPING STONE - ROUND	18"x 18"x 1 1/4"±
STEPPING STONE - IRREGULAR	15"-18"x1 1/4"±
WALL CAP (4 sides rock face)	12"x24"x1 1/4"±
	16"x24"x2"±

\*PAVER VERSAILLES PATTERN sizes include 8" x 8", 8" x 16", 16" x 16", 16" x 24"

**BULLNOSE** (1 long side bullnose)  
14" x 24" x 2"±



**EASED EDGE** (1 long side eased edge)  
14" x 24" x 2"±



## COLUMN CAP

(4 sides rock face)  
24"x24"x1 1/4"±, 24"x24"x2"±



## WALL CAP

(4 sides rock face)  
12"x24"x1 1/4"±, 16"x24"x2"±



## ROCK FACE JUMBO PATTERN 1 1/4"±

(4 sides rock face)  
12"x12"x1 1/4"±  
12"x24"x1 1/4"±  
24"x24"x1 1/4"±  
24"x36"x1 1/4"±



## PAVER VERSAILLES PATTERN 1 1/4"±

(4 sides saw cut)  
Also available  
in loose:  
16"x24"x1 1/4"±



## DRIVEWAY PAVERS (rock face)

6"x6"x1 1/2"±  
6"x9"x1 1/2"±



## FLAGSTONE

1"± (Concrete Base)  
2"± (Sand Base)



## STEPPING STONES



(HEART) 15"x 18"x 1 1/4"±



(ROUND) 18"x 18"x 1 1/4"±



(IRREGULAR) 15"-18"x1 1/4"±





## DUSTY WAVE

Dusty Wave is a light cream, beige-colored sandstone invigorating with ripped marking suggestive of desert waves. The light sandstone with darker orange to brown waves can create a refreshing look for any surface.

**Finish:** Natural finish, chiseled edges.

Color Variation: ★★★★★☆

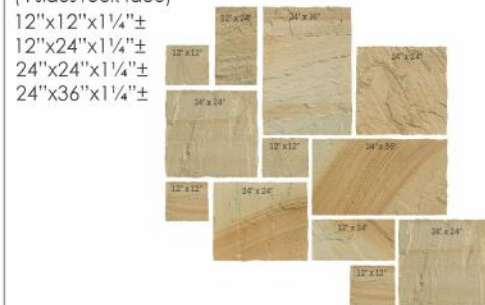
TYPE	SIZE IN INCHES (Approx.)
COLUMN CAP (4 sides rock face)	24"x24"x1 1/4"±
	12"x12"x1 1/4"±
	12"x24"x1 1/4"±
	24"x24"x1 1/4"±
ROCK FACE JUMBO PATTERN (4 sides rock face)	24"x36"x1 1/4"±
	24"x24"x1 1/4"±
	24"x24"x2"±
	12"x12"x1 1/4"±
STEP (4 Sides rock face)	48"x14"x6"±
WALL CAP (4 sides rock face )	12"x24"x1 1/4"±



**STEP** (4 sides rock face)  
48"x16"x6"±



**ROCK FACE JUMBO PATTERN 1 1/4"±**  
(4 sides rock face)



**WALL CAP** (4 sides rock face)  
12"x24"x1 1/4"±



**COLUMN CAP** (4 sides rock face)  
24"x24"x1 1/4"±



## VINTAGE WHITE

Vintage white sandstone features a blend of ivory and cream tones which offers a unique blend of colors throughout, providing a stunning finish to any surroundings. The light tones will brighten up the environment blending well with darker and bolder colors to create a sense of space.

**Finish:** Thermal finish edges are saw-cut or chiseled depending on the product.

Color Variation: ★★☆☆☆☆

TYPE	SIZE IN INCHES (Approx.)
BULLNOSE (1 long side bullnose)	12"x24"x1 1/2"±
COLUMN CAP (4 sides rock face)	24"x24"x1 1/4"±
	24"x24"x2"±
	14"x24"x2"±
	12"x12"x1 1/4"±
EASED EDGE (1 long side eased edge)	12"x24"x1 1/4"±
	24"x24"x1 1/4"±
	24"x36"x1 1/4"±
	12"x24"x1 1/4"±
WALL CAP (4 sides rock face )	12"x24"x1 1/4"±
	14"x24"x2"±



**BULLNOSE** (1 long side bullnose)  
12"x24"x1 1/2"±



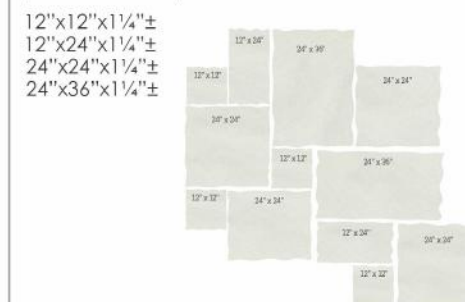
**EASED EDGE** (1 long side eased edge)  
14"x24"x2"±



**COLUMN CAP** (4 sides rock face)  
24"x24"x1 1/4"±  
24"x24"x2"±



**ROCK FACE JUMBO PATTERN 1 1/4"±**  
(4 sides rock face)



**WALL CAP** (4 sides rock face)  
12"x24"x1 1/4"±  
14"x24"x2"±







# BROWN MIST



TYPE	SIZE IN INCHES (Approx.)
COLUMN CAP (4 sides rock face)	24"x24"x1 1/4"±
FLAGSTONE (Concrete Base)	1"±
ROCK FACE RANDOM PATTERN (4 sides rock face)	12"x12"x1 1/4"±
	12"x24"x1 1/4"±
	24"x24"x1 1/4"±
SLAB (4 sides rock face)	72"x36"x2"±
STEP (4 sides rock face)	48"x16"x6"±
TREAD (3 sides rock face & 1 long side saw cut)	60"x16"x2"±
WALL CAP (4 sides rock face)	12"x24"x1 1/4"±
	14"x24"x2"±
WINDOW SILL (1 long sides rock face)	24"x3"x2"±

**COLUMN CAP** (4 sides rock face)  
24"x24"x1 1/4"±



This beige sandstone display is a multi verse of dark brown and golden yellow ripped markings and veins throughout the surface.

**Finish:** Sawn finish, edges are saw-cut, bullnose, chiseled edges or a mixture depending on the product.

Color Variation: ★★☆☆☆

## FLAGSTONE

1"± (concrete base)



## ROCK FACE RANDOM PATTERN 1 1/4"±

(4 sides rock face)

12"x12"x1 1/4"±  
12"x24"x1 1/4"±  
24"x24"x1 1/4"±



## WALL CAP

(4 sides rock face)  
12"x24"x1 1/4"±, 14"x24"x2"±



## TREAD (3 sides rock face & 1 long side saw cut)

60"x16"x2"±



## SLAB (4 sides rock face)

72"x36"x2"±



## STEP (4 sides rock face)

48"x16"x6"±



## WINDOW SILL (1 long sides rock face)

24"x3"x2"±





Buff shows dark variants of brown. It has a warm, earthy tone that is often used to create landscaping ideas. The neutral palette makes it a popular choice for outdoors that creates cozy and inviting spaces.

**Finish:** Natural finish, chiseled edges.

**Color Variation:** ★☆☆☆☆

**IRREGULAR POOL COPING 1½"±**  
(4 sides rock face)



**ROCK FACE JUMBO PATTERN**

(4 sides rock face)

7/8"± (Small)  
7/8"± (Big)



TYPE	SIZE IN INCHES (Approx.)
FIREPIT	Small- H-13", I-24", O-42"
	Big- H-17", I-32", O-56"
ROCK FACE JUMBO PATTERN (4 sides rock face)	¾"± (Small)
	¾"± (Big)
IRREGULAR POOL COPING (4 sides rock face)	1½"±
*ROCK FACE JUMBO PATTERN sizes include 12"x12", 12"x24, 24"x24", 24"x36"± Nominal sizing ¾"± under	



**FIREPIT**



Small- H-13", I-24", O-42"



Big- H-17", I-32", O-56"

Slate grey comprises light and dark grey variants. The beautiful color scheme of this natural stone easily blends with the entire landscaping design idea. It is often used to create a neutral, calming, and sophisticated appearance.

**Finish:** Natural finish, chiseled edges.

**Color Variation:** ★★☆☆☆

**IRREGULAR POOL COPING 1½"±**  
(4 sides rock face)



**ROCK FACE JUMBO PATTERN**

(4 sides rock face)

7/8"± (Small)  
7/8"± (Big)



TYPE	SIZE IN INCHES (Approx.)
FIREPIT	Small- H-13", I-24", O-42"
	Big- H-17", I-32", O-56"
ROCK FACE JUMBO PATTERN (4 sides rock face)	¾"± (Small)
	¾"± (Big)
FLAGSTONE	1" – Concrete Base
	2" – Sand Base
IRREGULAR POOL COPING (4 sides rock face)	1½"±
*ROCK FACE JUMBO PATTERN sizes include 12"x12", 12"x24, 24"x24", 24"x36"± Nominal sizing ¾"± under	

**FLAGSTONE**

1" – Concrete Base  
2" – Sand Base



**FIREPIT**



Small- H-13", I-24", O-42"



Big- H-17", I-32", O-56"





# LIMESTONE



Limestone is a sedimentary rock composed primarily of calcium carbonate in the form of the mineral called calcite. It can contain considerable amounts of magnesium carbonate along with clay, iron carbonate, feldspar, pyrite and quartz in small amounts.

Limestone is known as a heavy, hard-wearing stone with a lightly textured surface which makes it an excellent material for patios. It's a very dense and durable stone and its use in architecture can be traced back to the pyramids or Egypt. There are hundred types of limestone available in different colors, textures and varying degrees of permeability making it aesthetically versatile. Limestone are extremely versatile as you can use them in a vast range of outdoor areas including patios, pathways, courtyards, verandas, pool side and stepping stones. Some types are better suited for flat exterior surfaces than others. Furthermore, it has a naturally non-slip surface making it perfectly safe for areas that might get wet such as around pools, hot tubs and ponds.

**Disclaimer:**

Efflorescence is a crystalline deposit of salts created when water is present especially on limestones. Efflorescence diminishes the color and brightness of the surface giving a false notion that the stone has begun to fade when these deposits overshadow their original hue and shade.



LIME BLACK

INDIAN BLUESTONE

FRENCH VANILLA

ANTIQUE BLACK





# ANTIQUE BLACK



## FLAGSTONE

1"± (Concrete Base)  
2"± (Sand Base)



## BULLNOSE (1 long side bullnose)

12"x24"x1 1/2"±  
14"x24"x2"±



## EASED EDGE (1 long side eased edge)

14"x24"x2"±



Antique Black consists of a black and charcoal tones. The surface is tumbled to get a smooth, chalky antique look, which will dramatically change the ambiance of your project.

**Finish:** Tumbled finish, edges are saw-cut, bullnose, chiseled edges or a mixture depending on the product.

**Color Variation:** ★★☆☆☆

*\*Disclaimer: Antique black limestone is rich in mineral salts which over time can result in efflorescence which diminishes the color of the natural stone.*

TYPE	SIZE IN INCHES (Approx.)
BULLNOSE (1 long side bullnose)	12"x24"x1 1/2"±
	14"x24"x2"±
	24"x24"x1 1/4"±
	22"x22"x2"±
COLUMN CAP (4 sides rock face)	24"x24"x2"±
	24"x24"x2"±
	24"x24"x2"±
	29"x29"x2"±
EASED EDGE (1 long side eased edge)	14"x24"x2"±
DRIVEWAY PAVERS (rock face)	6"x6"x1 1/2"±
	6"x9"x1 1/2"±
	8"x4"x2"±
DRIVEWAY PAVERS (saw cut)	6"x6"x2"±
	6"x9"x2"±
FLAGSTONE (Concrete Base)	1"±
FLAGSTONE (Sand Base)	2"±
PAVER JUMBO PATTERN (4 sides saw cut)	12"x12"x1 1/4"±
	12"x24"x1 1/4"±
	24"x24"x1 1/4"±
	24"x36"x1 1/4"±
ROCK FACE JUMBO PATTERN (4 sides rock face)	12"x12"x1 1/4"±
	12"x24"x1 1/4"±
	24"x24"x1 1/4"±
	24"x36"x1 1/4"±
STEPPING STONE - HEART	15"x18"x1 1/4"±
STEPPING STONE - ROUND	18"x18"x1 1/4"±
STEPPING STONE - IRREGULAR	15"-18"x1 1/4"±
TILE (4 sides saw cut)	12"x24"x3/4"±
WALL CAP (4 sides rock face)	12"x24"x1 1/4"±
WALL CAP (4 sides rock face)	16"x24"x2"±
WINDOW SILL (1 long side rock face)	24"x3"x2"±

## PAVER JUMBO PATTERN 1 1/4"±

(4 sides saw cut)

12"x12"x1 1/4"±  
12"x24"x1 1/4"±  
24"x24"x1 1/4"±  
24"x36"x1 1/4"±



## ROCK FACE JUMBO PATTERN 1 1/4"±

(4 sides rock face)

12"x12"x1 1/4"±  
12"x24"x1 1/4"±  
24"x24"x1 1/4"±  
24"x36"x1 1/4"±



## COLUMN CAP (4 sides rock face)

24"x24"x1 1/4"±  
22"x22"x2"±  
24"x24"x2"±  
26"x26"x2"±  
29"x29"x2"±



## WALL CAP (4 sides rock face)

12"x24"x1 1/4"±  
16"x24"x2"±



## DRIVEWAY PAVERS

(Rock Face)

6"x6"x1 1/2"±, 6"x9"x1 1/2"±,  
8"x4"x2"±



(Saw Cut)

6"x6"x2"±, 6"x9"x2"±



## WINDOW SILL (1 long sides rock face)

24"x3"x2"±



## STEPPING STONES



(HEART) 15"x18"x1 1/4"±



(ROUND) 18"x18"x1 1/4"±



(IRREGULAR) 15"-18"x1 1/4"±

## TILE (4 sides saw cut)

12"x24"x3/4"±



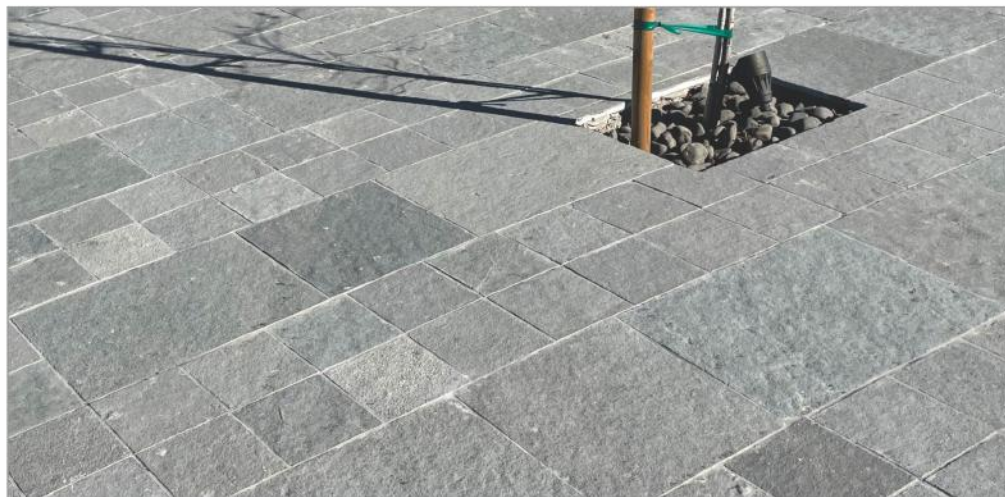
\* Special order only.







# INDIAN BLUESTONE



Indian Bluestone comprises darker tones of blues and greys. Similar to other limestones, the surface is relatively smooth and flat with fewer ridges making it suitable for a variety of applications, including interiors and exteriors.

**Finish:** Natural finish, edges are saw-cut, bullnose, chiseled edges or a mixture depending on the product.

Color Variation: ★★☆☆☆

## FLAGSTONE

1"± (Concrete Base)

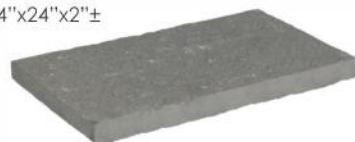
2"± (Sand Base)



TYPE	SIZE IN INCHES (Approx.)
BULLNOSE (1 long side bullnose)	12"x24"x1 1/4"±
	14"x24"x2"±
	24"x24"x1 1/4"±
	22"x22"x2"±
COLUMN CAP (4 sides rock face)	24"x24"x2"±
	26"x26"x2"±
	14"x24"x2"±
	1"±
EASED EDGE (1 long side eased edge)	1"±
	2"±
	12"x12"x1 1/4"±
	12"x24"x1 1/4"±
PAVER JUMBO PATTERN (4 sides saw cut)	24"x24"x1 1/4"±
	24"x36"x1 1/4"±
	12"x12"x1 1/4"±
	12"x24"x1 1/4"±
ROCK FACE JUMBO PATTERN (4 sides rock face)	24"x24"x1 1/4"±
	24"x36"x1 1/4"±
	12"x12"x1 1/4"±
	12"x24"x1 1/4"±
TILE VERSAILLES PATTERN (4 sides saw cut)	8"x8"x3/4"±
	8"x16"x3/4"±
	16"x16"x3/4"±
	16"x24"x3/4"±
Also available in loose size: 8" x 8", 8" x 16", 16" x 16", 16" x 24"	
TREADS (3 sides rock face & 1 long side saw cut)	48"x12"x1 1/2"±
	60"x16"x1 1/2"±
	12"x24"x1 1/4"±
WALL CAP (4 sides rock face)	14"x24"x2"±
	VERSAILLES PATTERN sizes include 8"x8", 8"x16", 16"x16", 16"x24"
Normal sizing 1/2"± under	

## EASED EDGE (1 long side eased edge)

14"x24"x2"±



## PAVER JUMBO PATTERN 1 1/4"±

(4 sides saw cut)

12"x12"x1 1/4"±  
12"x24"x1 1/4"±  
24"x24"x1 1/4"±  
24"x36"x1 1/4"±



## ROCK FACE JUMBO PATTERN 1 1/4"±

(4 sides rock face)

12"x12"x1 1/4"±  
12"x24"x1 1/4"±  
24"x24"x1 1/4"±  
24"x36"x1 1/4"±



## TILE VERSAILLES PATTERN

(4 sides saw cut)

8"x8"x3/4"±  
8"x16"x3/4"±  
16"x16"x3/4"±  
16"x24"x3/4"±



## BULLNOSE (1 long side bullnose)

12"x24"x1 1/4"±  
14"x24"x2"±



## PAVER VERSAILLES PATTERN 3/4"±

(4 sides saw cut)

Also available in loose:

8"x8"x3/4"±  
8"x16"x3/4"±  
16"x16"x3/4"±  
16"x24"x3/4"±



## COLUMN CAP (4 sides rock face)

24"x24"x1 1/4"±  
22"x22"x2"±  
24"x24"x2"±  
26"x26"x2"±



## WALL CAP (4 sides rock face)

12"x24"x1 1/4"±  
14"x24"x2"±



## TREADS (3 sides rock face & 1 long side saw cut)

48"x12"x1 1/2"±  
60"x16"x1 1/2"±







# LIME BLACK

Lime Black shows nice blend of black & charcoal tones with non-tumbled finish. Depicting fewer ridges on the surface, it serves an ideal option for creating an innovative landscaping design idea.

**Finish:** Natural finish, edges are saw-cut, bullnose, chiseled edges or a mixture depending on the product.

**Color Variation:** ★★☆☆☆

\*Disclaimer: Lime black limestone is rich in mineral salts which over time can result in efflorescence which diminishes the color of the natural stone.

TYPE	Size in Inches (Approx.)
COLUMN CAP (4 sides rock face)	24"x24"x1 1/4"±
	22"x22"x2"±
	24"x24"x2"±
EASED EDGE (1 long side eased edge)	14"x24"x2"±
FLAGSTONE (Concrete Base)	1"±
FLAGSTONE (Sand Base)	2"±
PAVER JUMBO PATTERN (4 sides saw cut)	12"x12"x1 1/4"±
	12"x24"x1 1/4"±
	24"x24"x1 1/4"±
	24"x36"x1 1/4"±
	12"x12"x1 1/4"±
ROCK FACE JUMBO PATTERN (4 sides rock face)	12"x24"x1 1/4"±
	24"x24"x1 1/4"±
	24"x36"x1 1/4"±
	12"x12"x1 1/4"±
SLAB (4 sides rock face)	72"x36"x2"±
STEP (4 sides rock face)	48"x16"x6"±
TREADS (3 side rock face & 1 long side saw cut)	48"x12"x2"±
	60"x16"x2"±
	60"x20"x2"±
	72"x18"x2"±
WALL CAP (4 sides rock face)	12"x24"x1 1/4"±
	14"x24"x2"±
WINDOW SILL (1 long sides rock face)	24"x3"x2"±

## TREADS (3 sides rock face & 1 long side saw cut)

48"x12"x2"±, 60"x16"x2"±  
60"x20"x2"±, 72"x18"x2"±



## FLAGSTONE

1"± (Concrete Base)  
2"± (Sand Base)



## PAVER JUMBO PATTERN 1 1/4"±

(4 sides saw cut)

12"x12"x1 1/4"±  
12"x24"x1 1/4"±  
24"x24"x1 1/4"±  
24"x36"x1 1/4"±



## COLUMN CAP (4 sides rock face)

24"x24"x1 1/4"±  
22"x22"x2"±  
24"x24"x2"±



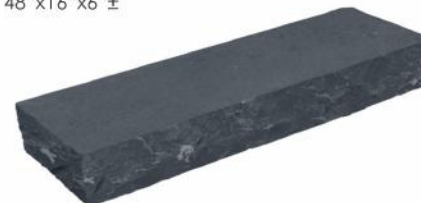
## EASED EDGE (1 long side eased edge)

14"x24"x2"±



## STEP (4 side rock face)

48"x16"x6"±



## ROCK FACE JUMBO PATTERN 1 1/4"±

(4 sides rock face)

12"x12"x1 1/4"±  
12"x24"x1 1/4"±  
24"x24"x1 1/4"±  
24"x36"x1 1/4"±



## WALL CAP (4 sides rock face)

12"x24"x1 1/4"±  
14"x24"x2"±



## SLAB (4 sides rock face)

72"x36"x2"±



## WINDOW SILL (1 long side rock face)

24"x3"x2"±



\* Special order only.



\* Special order only.





# FRENCH VANILLA

French Vanilla Limestone Comprises mainly pale shades of yellow with hints of grey and green undertones. This limestone brightens up the surrounding with a warm and welcoming environment. Additionally, light-colored stone complements a wide variety of designs & can easily incorporate bold colors into the design.

**Finish:** Natural finish, edges are saw-cut or chiseled depending on the product.

Color Variation: ★★★★★



TYPE	Size in Inches (Approx.)
COLUMN CAP (4 sides rock face)	24"x24"x1 1/4"± 24"x24"x2"±
FLAGSTONE (Concrete Base)	1"±
FLAGSTONE (Sand Base)	2"±
PAVER RANDOM PATTERN (4 sides saw cut)	12"x12"x1 1/4"± 12"x24"x1 1/4"± 24"x24"x1 1/4"± 12"x12"x1 1/4"±
ROCK FACE JUMBO PATTERN (4 sides rock face)	12"x24"x1 1/4"± 24"x24"x1 1/4"± 24"x36"x1 1/4"±
SLAB (4 sides rock face)	60"x36"x2"±
STEP (4 sides rock face)	48"x16"x6"±
STEPPING STONE - HEART	15"x 18"x 1 1/4"±
TILE (4 sides saw cut)	16"x16"x3/4"± 24"x24"x3/4"±
TREAD (3 side Rock Face & 1 long side saw cut)	60"x16"x2"±
WALL CAP (4 sides Rock Face)	12"x24"x1 1/4"± 14"x24"x2"±

## FLAGSTONE

1"± (Concrete Base)  
2"± (Sand Base)



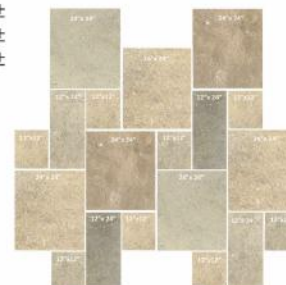
**TREAD** (3 side rock face & 1 long side saw cut)  
60"x16"x2"±



## PAVER RANDOM PATTERN 1 1/4"±

(4 sides saw cut)

12"x12"x1 1/4"±  
12"x24"x1 1/4"±  
24"x24"x1 1/4"±



## ROCK FACE JUMBO PATTERN 1 1/4"±

(4 sides rock face)

12"x12"x1 1/4"±  
12"x24"x1 1/4"±  
24"x24"x1 1/4"±  
24"x36"x1 1/4"±



## COLUMN CAP (4 sides rock face)

24"x24"x1 1/4"±  
24"x24"x2"±



## WALL CAP (4 sides rock face)

12"x24"x1 1/4"±  
14"x24"x2"±



## STEPPING STONE - HEART

15"x18"x1 1/4"±



## SLAB (4 sides rock face)

60"x36"x2"±



## STEP (4 sides rock face)

48"x16"x6"±



## TILE (4 sides saw cut)

16"x16"x3/4"±  
24"x24"x3/4"±







## TRAVERTINE

Travertine is a form of limestone formed by the precipitation of carbonate mineral solution in ground and surface waters. Exposure to heat causes the evasion of carbon dioxide from the alkaline solution leaving behind holes on the surface. This reduces the solubility of carbonate, making it precipitate.

Travertine has been used for centuries to build exquisite architectural marvels that are still standing to this day, the most famous coliseum also known as the flavian amphitheatre in Rome. Its proven durability and lasting beauty have continued to prompt builders and homeowners to choose travertine tiles or pavers in modern building projects. Travertine is so versatile; it can be used in a number of places both inside and outside. While regular maintenance and care are required with travertine floors, these materials have the potential to last a long time. Travertine tiles are a great choice when it comes to floors and walls of Kitchens, hallways and bathrooms. The exterior elements like walkways, sidewalks, patio, swimming pool and exterior walls etc. can be built using travertine.

**Disclaimer: Travertine is a porous stone and the surface will have visible pores. The pores are the inherent nature of the stone which adds a unique look to the stone and should not be considered as defects.**



## ANTIQUE IVORY



Antique Ivory has a range of colors from cream to light beige that gives it a graceful look to your interiors and exteriors. This light color of travertine is widely used around the pool coping, on wall cladding & floors.

**Finish:** Tumbled finish, edges are saw-cut, bullnose or a mixture depending on the product.

Color Variation: ★★☆☆☆

*\*Disclaimer: Travertine is not a dense product which makes it less suitable for use in Freeze/Thaw climates.*

### PAVER RANDOM PATTERN 1 1/4"± (4 sides saw cut)

Also available in loose:

16"x24"x1 1/4"±



### LEDGESTONE (Non-cement backing)

Corner- 6"x18"x6"x3/4"±

Panel- 6"x24"x3/4"±



TYPE	Size in Inches (Approx.)
BULLNOSE (1 long side bullnose)	12"x24"x2"± 16"x24"x2"±
EASED EDGE (1 long side eased edge)	12"x24"x2"± 16"x24"x2"±
LEDGE STONE-PANEL	6"x24"x3/4"±
LEDGE STONE-CORNER	6"x18"x6"x3/4"±
PAVER	16"x24"x1 1/4"±
PAVER VERSAILLES PATTERN (4 sides saw cut)*	1 1/4"±
*PAVER VERSAILLES PATTERN sizes include 8"x8", 8"x16", 16"x24" Nominal sizing 1/2"± under	

### BULLNOSE (1 long side bullnose)

12"x24"x2"±  
16"x24"x2"±



### EASED EDGE (1 long side eased edge)

12"x24"x2"±  
16"x24"x2"±







## ANTIQUE GRIS



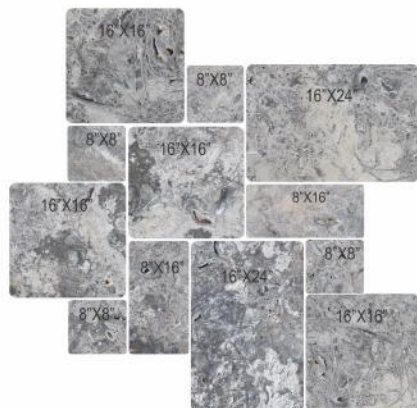
A beautiful blend of silver, grey and white adds a captivating factor to the conventional travertine. This neutral colored travertine blends well with other colors and provides a modern edge to both interior and exterior applications.

**Finish:** Tumbled finish, edges are saw-cut, bullnose or a mixture depending on the product.

**Color Variation:** ★★★★★

\*Disclaimer: Travertine is not a dense product which makes it less suitable for use in Freeze/Thaw climates.

### PAVER VERSAILLES PATTERN 1 1/4"± (4 sides saw cut)



TYPE	Size in Inches (Approx.)
BULLNOSE (1 long side bullnose)	12"x24"x2"± 16"x24"x2"±
EASED EDGE (1 long side eased edge)	12"x24"x2"± 16"x24"x2"±
LEDGE STONE-PANEL	6"x24"x3/4"±
LEDGE STONE-CORNER	6"x18"x6"x3/4"±
PAVER VERSAILLES PATTERN (4 sides saw cut)	1 1/4"±

\*PAVER VERSAILLES PATTERN sizes include 8"x8", 8"x16", 16"x16", 16"x24" Nominal sizing 1/2"± under

**BULLNOSE** (1 long side bullnose)  
12"x24"x2"±  
16"x24"x2"±



**EASED EDGE** (1 long side eased edge)  
12"x24"x2"±  
16"x24"x2"±



**LEDGE STONE**  
(Non-cement backing)  
Corner- 6"x18"x6"x 3/4"±



Panel- 6"x24"x3/4"±



### LEDGE STONE (Non-cement backing)



Corner- 6"x18"x6"x 3/4"±



Panel- 6"x24"x3/4"±

## ANTIQUE SCABOS



Antique Scabos travertine showcases a wide range of colors from cream, red, brown and grey etc. Every piece is unique and flaunts a bold look for your design project.

**Finish:** Tumbled finish, edges are saw-cut.

**Color Variation:** ★★★★★

\*Disclaimer: Travertine is not a dense product which makes it less suitable for use in Freeze/Thaw climates.

**BULLNOSE** (1 long side bullnose)  
12"x24"x2"±



TYPE	Size in Inches (Approx.)
BULLNOSE (1 long side bullnose)	12"x24"x2"±
LEDGE STONE-PANEL	6"x24"x3/4"±
LEDGE STONE-CORNER	6"x18"x6"x3/4"±





# LEDGE STONE - PANEL/CORNER

GLUE BACKING  $\frac{3}{4}$ " $\pm$

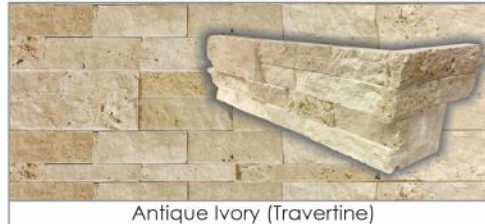


Ledge stone or stacked stone are stripes of natural stone arranged uniformly on a mesh to form a veneer. The ledge stone panels are "z" shaped designed to interlock with one another.

Panel- 6"x24"x $\frac{3}{4}$ " $\pm$   
Corner- 6"x18"x6"x $\frac{3}{4}$ " $\pm$



Antique Gris (Travertine)



Antique Ivory (Travertine)



Antique Scabos (Travertine)



Autumn Mist (Sandstone)



California Gold (Slate)



Floral White



Grey Mist (Sandstone)



Smoky Rust (Slate)



Classic Black (Slate)



Gold Quartz (Quartzite)



Silver Pearl (Slate Quartz Mix)



Steel Quartz (Quartzite)

CEMENT BACKING  $1\frac{1}{4}$ " $\pm$



Desert Gold (Quartzite Mix)



Sage Green (Quartzite)



Smoke Stack (Slate Mix)

\*The packing of corners shown herein (L-Shaped) is for reference only. Actual packaging and delivery of material contains separate pieces because of safety measures.







## BRICKS



Bricks are the type of natural stone designed to replicate the appearance of traditional bricks while offering the benefits of a thinner profile and lighter weight.

Flat 7.5"x2.25"x $\frac{5}{8}$ " $\pm$   
Corner 7.5"x3"x $\frac{5}{8}$ " $\pm$

### Antique Brown



### Antique Buff



### Red



### Silver Pearl



### Steel Quartz



## BASALT FOUNTAIN



basalt column water feature is a distinctive, natural, and stunning addition to any landscape project. If you want a genuinely eye-catching fountain, a basalt column fountain will be a great choice. Basalt's durability and striking appearance indeed make it an excellent choice for stone fountains.

L = 50" – 60" $\pm$ , W = 16" – 26" $\pm$ , Hole = 1.25" $\pm$



## IRREGULAR POOL COPING



Instead of uniform pieces of coping material, irregular coping involves using stones or pavers that vary in shape, size, and sometimes even color, giving the pool area a more natural and organic look. This style can lend a rustic, earthy, or even a Mediterranean vibe to the pool design, depending on the type of stone or material used. It often creates a visually interesting and unique border around the pool, enhancing its aesthetic appeal.

**Finish:** 4 sides rock face



### Slate Grey 1 $\frac{1}{2}$ " $\pm$



### Buff 1 $\frac{1}{2}$ " $\pm$



## FIREPIT



the outdoors is an ultimate gathering centerpiece, while it is the best place for roasting marshmallows for others. Varying upon the interest and requirements, outdoors play an ideal role in home upgrades.

**SMALL SIZE** - Height - 13" $\pm$ , Inner size - 24" $\pm$ , Outer size - 42" $\pm$   
**BIG SIZE** - Height - 17" $\pm$ , Inner size - 32" $\pm$ , Outer size - 56" $\pm$

### Slate Grey



### Buff







## SLAB

Slabs are generally used for making kitchen countertops and outdoor bbqs where grout joints dwindle the overall appeal of the structure. All four sides are chiseled to exhibit the natural beauty of the stone.

**Finish:** 4 sides rock face

### Autumn Mist

72"x36"x2"±



### Basalt (4 sides saw cut)

72"x27"x2"±



### Brown Mist

72"x36"x2"±



### French Vanilla

60"x36"x2"±



### Grey Mist

72"x36"x2"±



### Lime Black

72"x36"x2"±



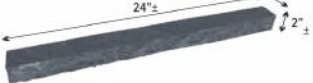
## WINDOW SILL

A window sill is the decorative covering around the window's edge that helps in draining the water to protect the window from water-based damages and also provides the aesthetic appeal to the place.

**Finish:** 1 long side rock face

### Antique Black

24"x3"x2"±



### Autumn Mist

24"x3"x2"±



### Brown Mist

24"x3"x2"±



### Grey Mist

24"x3"x2"±



### Lime Black

24"x3"x2"±



### Silver Pearl

24"x3"x2"±



## STEPS



Natural Stone Steps are the risers for places with elevation. Suitable for designing entryways, pool, backyard or front yard steps. Steps are extremely durable, the size of the stone makes it sturdy and reliable once it is installed.

**Finish:** 4 sides rock face



### Autumn Mist

48"x16"x6"±



### Basalt

(3 sides rock face & 1 long side saw cut)  
48"x16"x6"±



### Brown Mist

48"x16"x6"±



### Dusty Wave

48"x16"x6"±



### French Vanilla

48"x16"x6"±



### Grey Mist

48"x16"x6"±



### Indigo Bluestone

48"x16"x6"±



### Lime Black

48"x16"x6"±





# FLAGSTONE

Flagstones are irregularly shaped stones used for paving patios, walkways & pool areas. Irregular shape of the individual pieces allow the designer to create innovative and intriguing designs for any surfaces. Available in : 1"± Concrete base, 1¼"± and 2"± Sand base.



Antique Black - 1"± & 2"±



Antique Brown - 1"± & 2"±



Antique Charcoal - 2"±



Antique Gold - 1"± & 2"±



Antique Rustic - 1"± & 2"±



Antique Yellow - 1"± & 2"±



Autumn Mist - 1"± & 2"±



Basalt - 16"-30" x 1¼"±



Black Slate - 1"± & 2"±



Brown Mist - 1"±



California Gold - 1"± & 2"±



Chocolate - 1"±



Ebony Black- 1"± & 2"±



French Vanilla - 1"± & 2"±



Green Rustic - 1"± & 2"±



Grey Mist- 1"± & 2"±



Indian Autumn - 1"±



Indian Bluestone - 1"± & 2"±



Lime Black- 1"± & 2"±



Multi Classic - 1"± & 2"±



Ocean Green - 1"±



Panther- 1"± & 2"±



Silver Pearl - 1"± & 2"±



Slate Grey - 1"± & 2"±







## BULLNOSE

Bullnose is a term used to define a smooth rounded edge in masonry. It is generally used as a perimeter of various designs and provides a safer environment. Natural stones bullnoses are used for pool coping, wall caps, stairways, firepits etc. Available in a wide range of colors and texture, it provides an optimal solution to match or contrast according to your design requirements.

**Finish:** 1 long side bullnose



### Antique Black

12"x24"x1½"±  
14"x24"x2"±



### Antique Brown

14"x24"x2"±



### Antique Gris

12"x24"x2"±,  
16"x24"x2"±



### Antique Ivory

12"x24"x2"±,  
16"x24"x2"±



### Antique Scabos

12"x24"x2"±



### Antique Walnut

12"x24"x2"±, 16"x24"x2"±



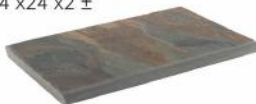
### Basalt

12"x24"x1½"±  
14"x24"x2"±



### California Gold

12"x24"x1½"±  
14"x24"x2"±



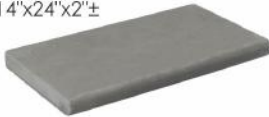
### Grey Mist

12"x24"x1½"±  
14"x24"x2"±



### Indian Bluestone

12"x24"x1½"±  
14"x24"x2"±



### Vintage White

12"x24"x1½"±



## EASED EDGE

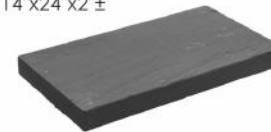


Eased edge is a smooth straight edge finish that provides an alternative to the bullnose edge. It is used to provide a safer environment for pool coping, wall caps, stairways, firepits etc.

**Finish:** 1 long side eased edge.

### Antique Black

14"x24"x2"±



### Antique Brown

14"x24"x2"±



### Antique Gris

12"x24"x2"±, 16"x24"x2"±



### Antique Ivory

12"x24"x2"±, 16"x24"x2"±



### Antique Yellow

14"x24"x2"±



### Basalt

14"x24"x2"±



### Grey Mist

14"x24"x2"±



### Indian Bluestone

14"x24"x2"±



### Lime Black

14"x24"x2"±



### Tundra Grey

12"x24"x2"±, 16"x24"x2"±



### Vintage White

14"x24"x2"±







## COLUMN CAP

Column caps are used to make a smooth transition for landscape walls serving as finishing touch for pillars, columns and mailboxes. Usually need to be larger than the dimensions of the column to allow overhang.

**Finish:** 4 sides rock face

### Antique Brown

24"x24"x1 1/4", 24"x24"x2"±



### Antique Buff

24"x24"x1 1/2"±



### Antique Black

24"x24"x1 1/4", 22"x22"x2"±  
24"x24"x2", 26"x26"x2", 29"x29"x2"±



### Antique Yellow

24"x24"x1 1/4"±



### Autumn Mist

24"x 24"x 1 1/2"±  
24"x 24"x 2", 29"x29"x2"±



### Brown Mist

24"x 24"x 1 1/4"±



### California Gold

24"x 24"x 2", 29"x29"x2"±



### Dusty Wave

24"x24"x1 1/4"±



### French Vanilla

24"x24"x1 1/4"±  
24"x24"x2"±



### Grey Mist

24"x24"x1 1/4", 22"x22"x2"±  
24"x24"x2", 26"x26"x2", 29"x29"x2"±



### Indian Bluestone

24"x24"x1 1/4", 22"x22"x2"±  
24"x24"x2", 26"x26"x2"±



### Lime Black

24"x24"x1 1/4", 22"x22"x2"±,  
24"x24"x2"±



### Vintage White

24"x24"x1 1/4", 24"x24"x2"±



\* Special order only.

## WALL CAP



Natural stone wall caps provide the perfect finishing touch to a stone retaining wall, or boundary walls.

**Finish:** 4 sides rock face

### Antique Brown

12"x24"x1 1/4"±  
16"x24"x2"±



### Antique Black

12"x24"x1 1/4"±  
16"x24"x2"±



### Antique Buff

12"x24"x1 1/2"±  
16"x24"x2"±



### Antique Yellow

12"x24"x1 1/4"±



### Autumn Mist

12"x24"x1 1/2"±  
14"x24"x2"±



### Basalt

14"x24"x2"±



### Brown Mist

12"x24"x1 1/4"±  
14"x24"x2"±



### California Gold

12"x24"x1 1/2"±



### Dusty Wave

12"x24"x1 1/4"±



### Ebony Black

14"x24"x2"±



### French Vanilla

12"x24"x1 1/4"±  
14"x24"x2"±



### Grey Mist

12"x24"x1 1/4"±  
14"x24"x2"±



### Indian Bluestone

12"x24"x1 1/4"±  
14"x24"x2"±



### Lime Black

12"x24"x1 1/4"±  
14"x24"x2"±



### Vintage White

12"x24"x1 1/4"±  
14"x24"x2"±







# THIN VENEER



Natural stone thin veneer is a thin layer of stone used as decorative material that is not meant to be load-bearing. Thin veneer can be used in thin sections because of the shorter span between anchoring points. Multiple units like Column covers, reveal window frames, parapet sections, etc are more economically assembled over thin veneer while enhancing the beauty of the structure.

Available Thickness: Flat 1½", Corner 1½"



Autumn Mist - Ledge



Black Pearl - Ledge



Black Pearl - Antique Castle



Creekside Blend - Ledge



Grey Mist Blend - Ledge



Grey Mist Blend - Antique Castle



Grey Mist - Ashlar



Mocha - Ledge



Silver Pearl - Antique Castle



Silver Pearl - Dimensional



Silver Pearl - Fieldstone



Silver Pearl - Ledge



Steel Quartz - Ashlar



Steel Quartz - Ledge



Tucson Farmhouse - Square Rectangular





## STEPPING STONES

Stepping stones provide a pathway to navigate through your garden. The ease of installation coupled with creativity will provide an elegant look to any layout.

**Antique Black (irregular)**  
15"x18"x1¼"±



**Antique Brown (irregular)**  
15"x18"x1¼"±



**Autumn Mist (irregular)**  
15"x18"x1¼"±



**Grey Mist (irregular)**  
15"x18"x1¼"±



**Antique Black (Heart)**  
15"x18"x1¼"±



**Antique Brown (Heart)**  
15"x18"x1¼"±



**French Vanilla (Heart)**  
15"x18"x1¼"±



**Multi classic (Heart)**  
15"x18"x1¼"±



**Antique Black (Round)**  
18"x18"x1¼"±



**Antique Brown (Round)**  
18"x18"x1¼"±



**Multi Classic(Round)**  
18"x18"x1¼"±



**Multi Classic(Square)**  
18"x18"x1¼"±



## PEBBLES

Pebbles are smooth rounded stones used for decorative purposes. Commonly used as ground cover, it is used externally to create multi-textured pathways or walkways, garden mulch and decorate drains.

Available in : 1"-3"±, 1"-3"±(loose)

**Crystal White**



**Polished Black**



**Yellow High Polished**



**Mix High Polished**



**White High Polished**



Disclaimer- Not recommended the use of any pebbles in conjunction with DYED mulches of any kind.



## COBBLESTONES

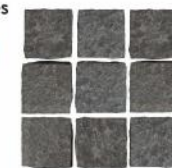
Cobblestones are cubical granite stones used to pave roads, driveways, walls & fireplace hearths. The durability & aesthetic appeal of the stone makes it an optimal choice for load-bearing areas like driveways.



**Black Cobbles**  
3½"x3½"x2"±  
8"x4"x2"±



**Basalt Cobbles**  
3½"x3½"x2"±  
3½"x3½"x3½"±



**Ebony Black Cobbles**  
3½"x3½"x2"±  
3½"x3½"x3½"±



**Gold Cobbles**  
3½"x3½"x2"±  
8"x4"x2"±



**Grey Cobbles**  
3½"x3½"x2"±



## DRIVEWAY PAVERS



Driveways are an important part of an entrance that adds to the attractiveness of curb. Natural stone driveway pavers can give an exquisite appearance to your driveway while providing the durability to withstand vehicular use.

**Antique Black**  
(4 side Rock Face)

6"x6"x1½"±, 6"x9"x1½"±, 8"x4"x2"±



**Antique Black**  
(4 side Saw Cut)

6"x6"x2"±, 6"x9"x2"±



**Antique Brown**  
(4 side Rock Face)

6"x6"x1½"±, 6"x9"x1½"±



\* Special order only.





# ROCK FACE JUMBO PATTERN

## Antique Black 1 1/4"± (4 sides rock face)

Sizes Available:

12"x12"±  
12"x24"±  
24"x24"±  
24"x36"±



## Antique Brown 1 1/4"± (4 sides rock face)

Sizes Available:

12"x12"±  
12"x24"±  
24"x24"±  
24"x36"±



## Antique Buff 1 1/2"± (4 sides rock face)

Sizes Available:

12"x12"±  
12"x24"±  
24"x24"±  
24"x36"±



## Autumn Mist 1 1/2"± (4 sides rock face)

Sizes Available:

12"x12"±  
12"x24"±  
24"x24"±  
24"x36"±



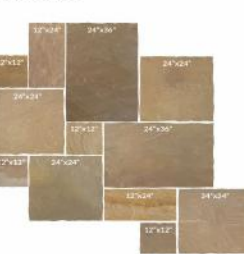
## Basalt 1 1/4"± (4 sides rock face)

Sizes Available:

12"x12"±  
12"x24"±  
24"x24"±  
24"x36"±



## Buff 7/8"± (4 sides rock face)



## Dusty Wave 1 1/4"± (4 sides rock face)

Sizes Available:

12"x12"±  
12"x24"±  
24"x24"±  
24"x36"±



## French Vanilla 1 1/4"± (4 sides rock face)

Sizes Available:

12"x12"±  
12"x24"±  
24"x24"±  
24"x36"±



## Grey Mist 1 1/4"± (4 sides rock face)

Sizes Available:

12"x12"±  
12"x24"±  
24"x24"±  
24"x36"±



## Indian Bluestone 1 1/4"± (4 sides rock face)

Sizes Available:

12"x12"±  
12"x24"±  
24"x24"±  
24"x36"±



## Lime Black 1 1/4"±

(4 sides rock face)

Sizes Available:

12"x12"±  
12"x24"±  
24"x24"±  
24"x36"±



## Slate Grey 7/8"±

(4 sides rock face)



## Vintage White 1 1/4"±

(4 sides rock face)

Sizes Available:

12"x12"±  
12"x24"±  
24"x24"±  
24"x36"±



# ROCK FACE RANDOM PATTERN



## Antique Yellow 1 1/4"± (4 sides rock face)

Sizes Available:

12"x12", 12"x24", 24"x24"±



## Brown Mist 1 1/4"± (4 sides rock face)

Sizes available:

12"x12", 12"x24", 24"x24"±







# TREADS

Treads are long rectangular capstones used on stairs, front doorsteps, wall capping. The length of the tread can minimize the number of grout joints for a flawless design structure. Additionally, they can be used as mantels and hearths for fireplaces.

**Finish:** 3 sides rock face & 1 long side saw cut



**Autumn Mist** 60"x16"x2"±  
72"x18"x2"±



**Basalt** (3 sides eased edge & 1 long side rock face)  
48"x12"x2"±  
60"x16"x2"±



**Brown Mist** 60"x16"x2"±



**Ebony Black** 48"x12"x2"±  
60"x16"x2"±



**French Vanilla** 60"x16"x2"±



**Grey Mist** 48"x12"x2"±  
60"x16"x2"±  
60"x20"x2"±  
72"x18"x2"±



**Indian Bluestone** 48"x12"x1½"±  
60"x16"x1½"±



**Indigo Bluestone** 60"x16"x2"±

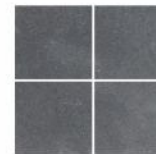


**Lime Black** 48"x12"x2"±  
60"x16"x2"±  
60"x20"x2"±  
72"x18"x2"±

# TILES

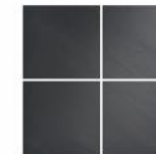


**Antique Black** (4 sides saw cut)  
12"x24"x¾"±



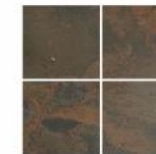
**Black Slate** (4 sides saw cut)

12"x12"x½"±  
12"x24"x½"±  
16"x16"x½"±  
24"x24"x½"±



**California Gold** (4 sides saw cut)

12"x12"x½"±  
12"x24"x½"±  
16"x16"x½"±  
24"x24"x½"±



**French Vanilla**  
(4 sides saw cut)

16"x16"x¾"±  
24"x24"x¾"±



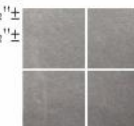
**Indian Autumn**  
(4 sides saw cut)

12"x12"x½"±  
16"x16"x½"±



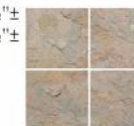
**INDIAN BLUESTONE**  
(4 sides saw cut)

12"x12"x½"±  
16"x16"x½"±  
24"x24"x½"±



**Multi Classic**  
(4 sides saw cut)

12"x12"x½"±  
16"x16"x½"±  
24"x24"x½"±



## VERSAILLES PATTERN

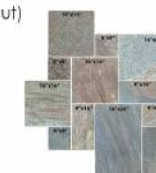


**Antique Brown 1¼"±**  
(4 sides saw cut)

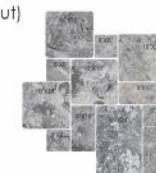
Also available in loose:  
16"x24"x1¼"±



**Antique Gold 1"±**  
(4 sides saw cut)



**Antique Gris 1¼"±**  
(4 sides saw cut)



**Antique Ivory 1¼"±**  
(4 sides saw cut)

Also available in loose:  
16"x24"x1¼"±



**Antique Rustic 1¼"±**  
(4 sides saw cut)

Also available in loose:  
8"x8"±  
8"x16"±  
16"x16"±  
16"x24"±



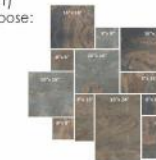
**Antique Yellow 1¼"±**  
(4 sides saw cut)

Also available in loose:  
16"x24"x1¼"±



**California Gold ½" & 1¼"±**  
(4 sides saw cut)

Also available in loose:  
8"x8"x1¼"±  
8"x16"x1¼"±  
16"x16"x1¼"±  
16"x24"x1¼"±

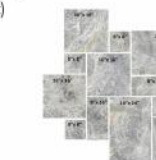


**Indian Bluestone ¾"±**  
(4 sides saw cut)

Also available in loose:  
8"x8"±  
8"x16"±  
16"x16"±  
16"x24"±



**Tundra Grey 1¼"±**  
(4 sides saw cut)







## PAVER JUMBO PATTERN



### Antique Black 1 1/4"± (4 sides saw cut)

Sizes Available:

12" x 12"±  
12" x 24"±  
24" x 24"±  
24" x 36"±



### Autumn Mist 1 1/4"± (4 sides saw cut)

Sizes Available:

12" x 12"±  
12" x 24"±  
24" x 24"±  
24" x 36"±



### Grey Mist 1 1/4"± (4 sides saw cut)

Sizes Available:

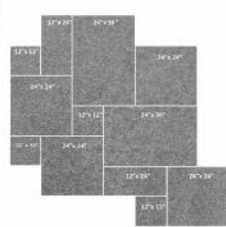
12" x 12"±  
12" x 24"±  
24" x 24"±  
24" x 36"±



### Basalt 1 1/4"± (4 sides saw cut)

Sizes Available:

12" x 12"±  
12" x 24"±  
24" x 24"±  
24" x 36"±



### Ebony Black 1 1/4"± (4 sides saw cut)

Sizes Available:

12" x 12"±  
12" x 24"±  
24" x 24"±  
24" x 36"±



### Indian Bluestone 1 1/4"± (4 sides saw cut)

Sizes Available:

12" x 12"±  
12" x 24"±  
24" x 24"±  
24" x 36"±



### Lime Black 1 1/4"± (4 sides saw cut)

Sizes Available:

12" x 12"±  
12" x 24"±  
24" x 24"±  
24" x 36"±



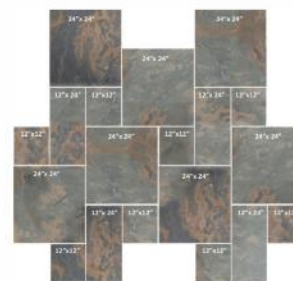
## PAVER RANDOM PATTERN



### California Gold 1 1/4"± (4 sides saw cut)

Sizes Available:

12" x 12"±  
12" x 24"±  
24" x 24"±



### French Vanilla 1 1/4"± (4 sides saw cut)

Sizes Available:

12" x 12"±  
12" x 24"±  
24" x 24"±



## DISPLAY RACKS







# PACKING CHART

Description	Colors Available	pcs/ box	boxes/ pallet	sq.ft./pallet (approx.)	pcs/ pallet	Weight/pallet (approx.) lbs
Bullnose 12"x24"x1 1/2"	ABL, CG, GM, IB, VW	LOOSE	LOOSE	150	75	3200
Bullnose 12"x24"x2"	AGS, AIV, ASC, AWA	LOOSE	LOOSE	80	40	2100
Bullnose 14"x24"x2"	ABL, ABR, BLT, CG, GM, IB	LOOSE	LOOSE	103	44	3200
Bullnose 16"x24"x2"	AGS, AIV, AWA	LOOSE	LOOSE	107	40	2800
Circle 12" Diameter	AM	-	-	113 approx.	49	1800
Cobblestone 3 1/2"x3 1/2"x3 1/2"	BL, BLT, EBL, GO, GRY	LOOSE	LOOSE	-	530	2500
Cobblestone 8"x4"x2"	BL, GO	LOOSE	LOOSE	-	270	2250
Cobblestone 3 1/2"x3 1/2"x2"	BLT, EBL	LOOSE	LOOSE	-	1410	3750
Column Cap 24"x24"x1 1/4"	ABL, ABR, AYE, BM, FV, GM, IB, LB, VW	LOOSE	LOOSE	112	28	2050
Column Cap 24"x24"x1 1/2"	ABF, AM	LOOSE	LOOSE	100	25	1850
Column Cap 22"x22"x2"	ABL, GM, IB, LB	LOOSE	LOOSE	67	20	2000
Column Cap 24"x24"x2"	ABL, ABR, AM, CG, FV, GM, IB, LB, VW	LOOSE	LOOSE	80	20	2350
Column Cap 26"x26"x2"	ABL, GM, IB	LOOSE	LOOSE	85	18	2450
Column Cap 29"x29"x2"	ABL, AM, CG, GM	LOOSE	LOOSE	105	18	3000
Driveway Pavers 6"x6"x1 1/2"	ABL, ABR	LOOSE	LOOSE	150	600	3250
Driveway Pavers 6"x9"x1 1/2"	ABL, ABR	LOOSE	LOOSE	150	400	3250
Driveway Pavers 6"x6"x2"	ABL	LOOSE	LOOSE	120	480	3300
Driveway Pavers 6"x9"x2"	ABL	LOOSE	LOOSE	120	320	3300
Driveway Pavers 8"x4"x2"	ABL	LOOSE	LOOSE	120	540	3300
Eased Edge 12"x24"x2"	AIV, AGS, TG	LOOSE	LOOSE	80	40	2100
Eased Edge 14"x24"x2"	ABL, ABR, AYE, BLT, GM, IB, LB, VW	LOOSE	LOOSE	103	44	3200
Eased Edge 16"x24"x2"	AIV, AGS, TG	LOOSE	LOOSE	107	40	2800
Flagstone Concrete Base 1"	ABL, ABR, AGO, ARU, AM, BL, BM, CG, CHO, EBL, FV, GM, GR, IA, IB, LB, MC, OG, PA, SP, SLG	LOOSE	LOOSE	coverage ~300 sq.ft./pallet	-	~3500-4500 /pallet
Flagstone Sand Base 2"	ABL, ABR, AGO, ARU, AM, BL, CG, EBL, FV, GM, GR, IB, LB, MC, PA, SP, SLG	LOOSE	LOOSE	coverage ~180 sq.ft./pallet	-	~3500-4500 /pallet
Flagstone 16"-30"x1 1/2"	BLT	LOOSE	LOOSE	-	-	2650
Fountain 48"-60"x60"-16"x1.25"	BLT	LOOSE	LOOSE	-	-	2500 lbs-3500 lbs
Firepit - Big 132"-O56"-H17"	BF, SLG	LOOSE	LOOSE	1 set	59	2100
Firepit - Small 124"-O42"-H13"	BF, SLG	LOOSE	LOOSE	1 set	30	1200
Irregular Pool Coping 1/2"	BF, SLG	LOOSE	LOOSE	15 sets	90	2550
Ledge Stone Panel 6"x24"x1 1/4"	AGS, AIV, ASC	6	30	180	180	1650
Ledge Stone Corner 6"x18"x5 1/4"	AGS, AIV, ASC	6	24	144	144	1600
Ledge Stone Panel 6"x24"x3 1/4"	AM, CG, CLB, FW, GM, GQU, SQ, SP, SR	5	36	180	180	1550
Ledge Stone Corner 6"x18"x5 1/4"	AM, CG, CLB, FW, GM, GQU, SQ, SP, SR	6	24	144	144	1250
Ledge Stone Panel 6"x24"x1 1/2"	DG, SG, SS	4	30	120	120	2000
Ledge Stone Corner 6"x18"x5 1/4"	DG, SG, SS	2	50	100	100	2600
Paver 8"x8"x1 1/2"	ARU, ASC, CG	LOOSE	LOOSE	107	240	1900
Paver 8"x16"x1 1/2"	ARU, ASC, CG	LOOSE	LOOSE	107	120	1900
Paver 12"x12"x1 1/2"	ABL, AM, BLT, CG, EBL, FV, GM, IB, LB, PG	LOOSE	LOOSE	144	144	2700
Paver 12"x24"x1 1/2"	ABL, AM, BLT, CG, EBL, FV, GM, IB, LB	LOOSE	LOOSE	150	75	2850
Paver 16"x16"x1 1/2"	ARU, ASC, CG	LOOSE	LOOSE	107	60	1900
Paver 16"x24"x1 1/2"	ABR, AIV, ARU, ASC, AWA, AYE, CG	LOOSE	LOOSE	160	60	2900
Paver 24"x24"x1 1/4"	ABL, AM, BLT, CG, EBL, FV, GM, IB, LB	LOOSE	LOOSE	112	28	2150
Paver 24"x36"x1 1/2"	ABL, AM, BLT, EBL, GM, IB, LB	LOOSE	LOOSE	168	28	3100
Paver Versailles Pattern 1"	AGO	LOOSE	LOOSE	192	144	2600
Paver Versailles Pattern 1 1/4"	ABR, AGS, AIV, ARU, ASC, AWA, AYE, CG, TG	LOOSE	LOOSE	160	120	2900
Pebbles 1"-3"	CW, MHP, PB, WHP, YHP	-	-	-	50 bags	1600(30lbs/bag)
Pebbles 1"-3" (loose)	CW, MHP, PB, WHP, YHP	-	-	-	50 bags	1600(30lbs/bag)
Rock Face Jumbo Pattern 3/4"	BF, SLG	LOOSE	LOOSE	216	72	2300
Rock Face Jumbo Pattern 3/4"x1(Small)	BF, SLG, GM	LOOSE	LOOSE	108	36	1100
Rock Face 12"x12"x1 1/4"	ABL, ABR, AYE, BM, BLT, FV, GM, IB, LB, VW	LOOSE	LOOSE	168	168	3100
Rock Face 12"x12"x1 1/2"	ABF, AM	LOOSE	LOOSE	150	150	2650
Rock Face 12"x24"x1 1/4"	ABL, ABR, AYE, BM, BLT, FV, GM, IB, LB, VW	LOOSE	LOOSE	168	84	3150
Rock Face 12"x24"x1 1/2"	ABF, AM	LOOSE	LOOSE	150	75	2650
Rock Face 24"x24"x1 1/4"	ABL, ABR, AYE, BM, BLT, FV, GM, IB, LB, VW	LOOSE	LOOSE	112	28	2200
Rock Face 24"x24"x1 1/2"	ABF, AM	LOOSE	LOOSE	100	25	1850
Rock Face 24"x36"x1 1/2"	ABL, ABR, BLT, FV, GM, IB, LB, VW	LOOSE	LOOSE	168	28	3100
Rock Face 24"x36"x1 1/4"	ABF, AM	LOOSE	LOOSE	150	25	2750
Slab 60"x36"x2"	FV	LOOSE	LOOSE	120	8	3550
Slab 72"x27"x2"	BLT	LOOSE	LOOSE	108	8	3400
Slab 72"x36"x2"	AM, BM, GM, LB, PG	LOOSE	LOOSE	144	8	4200
Stepping Stone Irregular 15"-18"x1"-1 1/2"	ABL, ABR, AM, GM	LOOSE	LOOSE	-	60	1800



Description	Colors Available	pcs/ box	boxes/ pallet	sq.ft./pallet (approx.)	pcs/ pallet	Weight/pallet (approx.) lbs
Stepping Stone Heart 15"x18"x1 1/4"	ABL, ABR, FV, MC	LOOSE	LOOSE	-	50	1800
Stepping Stone Round 18"x18"x1 1/4"	ABL, ABR, MC	LOOSE	LOOSE	-	50	1900
Stepping Stone Square 18"x18"x1 1/4"	MC	LOOSE	LOOSE	-	50	1350
Steps 48"x6"x6"	AM, BLT, BM, FV, GM, INB, LB	LOOSE	LOOSE	32	6	3150
Thin Veneer Flat 1"	AM, BP, CB, GMB, MO, SP, SQ, TF	LOOSE	LOOSE	200	-	2750
Thin Veneer Corner 1"	AM, BP, CB, GMB, MO, SP, SQ, TF	LOOSE	LOOSE	80 lf	-	1250
Thin Veneer Brick-Flat 7.5"x2.25"x1 1/4"	ABR, ABF, RD, SP, SQ	LOOSE	LOOSE	200	1700	1550
Thin Veneer Brick-Corner 3/4"	ABR, ABF, RD, SP, SQ	LOOSE	LOOSE	80 lf	-	550
Tile 8"x8"x3/4"	IB	LOOSE	-	178	400	1850
Tile 8"x16"x3/4"	IB	LOOSE	-	178	200	1850
Tile 12"x12"x3/4"	BL, CG, IA, MC	10	42	420	420	2500
Tile 12"x24"x3/4"	BL, CG	LOOSE	LOOSE	400	200	2500
Tile 12"x24"x1 1/4"	ABL	LOOSE	LOOSE	264	132	2500
Tile 16"x16"x3/4"	FV, IB	LOOSE	LOOSE	178	100	1900
Tile 16"x16"x1 1/4"	BL, CG, IA, MC	7	20	249	140	1800
Tile 16"x24"x3/4"	IB	LOOSE	LOOSE	267	100	2650
Tile 24"x24"x3/4"	FV	LOOSE	LOOSE	176	44	1900
Tile 24"x24"x1 1/4"	BL, CG, MC	LOOSE	LOOSE	200	50	1800
Treads 48"x12"x1 1/2"	IB	LOOSE	LOOSE	72	18	1550
Treads 48"x12"x2"	BLT, EBL, GM, LB, PG	LOOSE	LOOSE	72	18	2200
Treads 60"x16"x1 1/2"	IB	LOOSE	LOOSE	120	18	2650
Treads 60"x16"x2"	AM, BLT, BM, EBL, FV, GM, INB, LB	LOOSE	LOOSE	120	18	3600
Treads 60"x20"x2"	GM, LB	LOOSE	LOOSE	150	18	4000
Treads 72"x18"x2"	AM, GM, LB	LOOSE	LOOSE	135	15	3850
Versailles Pattern 1/2"	CG	16sf/box	22	352	264	2500
Versailles Pattern 3/4"	IB	16sf/box	16	256	192	2400
Wall Cap 12"x24"x1 1/4"	ABL, ABR, AYE, BM, FV, GM, IB, LB, VW	LOOSE	LOOSE	168	84	3150
Wall Cap 12"x24"x1 1/2"	ABF, AM, CG	LOOSE	LOOSE	150	75	3100
Wall Cap 14"x24"x2"	AM, BLT, BM, EBL, FV, GM, IB, LB, VW	LOOSE	LOOSE	103	44	3100
Wall Cap 16"x24"x2"	ABL, ABR, ABF	LOOSE	LOOSE	107	40	2950
Window Sill 24"x3"x2"	ABL, AM, BM, GM, LB, SP	LOOSE	LOOSE	50	100	1650

## ETHICS & SUSTAINABILITY POLICY STATEMENT

Imported natural stone are not only beautiful, it is a cost-effective choice for your dream project. When choosing an imported natural stone, it is important to choose a company that adheres to the Ethical Trading Initiative (ETI). Stone Universe cares deeply about this initiative and the ethical sourcing of all the material. Stone Universe Inc. has developed strict policies and guidelines to ensure that all our stone products are harvested and fabricated in environmentally sustainable ways, and that our stone is ethically produced.

We expect everyone we do business with — from our suppliers to retailers — to be responsible and proud of the safe working conditions provided by the Global Trade Initiative and Human Rights Standard.

## NOTES